



# SLEEK PLUS

MINI FLUORESCENT  
LIGHTING SOLUTIONS

Edition II



**JESCO**  
LIGHTING GROUP

## SLEEK PLUS

Sleek Plus is an award winning, patented collection of linear fluorescent fixtures designed for installation in coves, cabinets, and shelves – suitable for **Residential**, **Commercial**, **Retail** and **Hospitality** applications.

- Better optics and patented adjustability – increasing lighting performance.
- Simpler installation including special straight and angled plug-in wiring inter-connectors – lowering installation costs.
- Better operating features including a state-of-the-art electronic ballast and heat reducing material construction to maintain lamp and ballast life – lowering maintenance costs.
- Advanced Manufacturing Technology ensures better quality and better features than other products on the market, at affordable prices – saving owners on the purchasing costs.



Lighting solutions for **RESIDENTIAL** spaces providing comfort and a sophisticated quality of feeling.



Lighting solutions for **RETAIL** stores where accented and efficient highlighting of products is needed.



Lighting solutions for **HOSPITALITY** providing soft, atmospheric lighting for customer comfort and enjoyment.



Sleek Plus is ideal for **IN-CABINET** and **UNDER-CABINET** lighting in stores, restaurants, offices or home.



Sleek Plus provides soft and even **COVE LIGHTING**, highlighting the architectural quality of a space.



The patented Sleek Plus Adjustable features a unique aiming ability to highlight items on retail **DISPLAY SHELVES**.

## SLEEK PLUS COLLECTION

- The thinnest profile available today.
- Superb engineering using extruded aluminum housings to assure proper heat control and lamp life, efficiency, and maintenance of color output.
- Patent pending aiming feature available that maintains the sleek design.
- Carefully designed diffusion lens for coves and shelving.
- Standard color lamps and special order UV lamps available.
- Plug-in connectors simplifying installation, reducing costs.
- Single T4 or T5 and twin T5 fixtures in a wide variety of wattages, lengths, lumen outputs, and color temperatures.
- T4 and T5 lamp CRI > 82 for higher color rendition compared to T8 and T12 CRI > 70.

## TABLE OF CONTENTS

### SLEEK PLUS

T4 – 2-Wire Non-Grounded	6
T5 – 2-Wire Non-Grounded	7
Adjustable T4 – 3-Wire Grounded	8
T4 – 3-Wire Grounded	9
Adjustable T5 – 3-Wire Grounded	10
T5 – 3-Wire Grounded	11
Adjustable High Output T5 – 3-Wire Grounded	12
High Output T5 – 3-Wire Grounded	13
Adjustable 24V Low Voltage T5 – 3-Wire Grounded	14
24V Low Voltage T5 – 3-Wire Grounded	15
Twin Adjustable T5 – 3-Wire Grounded	16
Twin Adjustable High Output T5 – 3-Wire Grounded	17

### ACCESSORIES & COMPONENTS 18-19

Lamp Options	20
Replacement T4 Fluorescent Lamps	21
Replacement T5 Fluorescent Lamps	22
Replacement T5 High Output Fluorescent Lamps	23

### INDEX 24

# LINES OF LIGHT

## Sleek Plus/Grounded The Perfected T4/T5 Linkable Fluorescent System

Compare these features with any similar product available on the market today:

### **Commercial Specification Grade Design**

To achieve optimum performance there are several essential qualifiers that need to be considered: The need for the reduction of radiated emission noise, the control of heat to assure full lamp life and proper color output, coverage of safety issues that protect the sockets and wiring, and making easy the plug-in interconnection of fixtures. With these key design elements there is also a need to provide a variety of fixture lengths, lamp wattages, and color temperatures.

### **The Unique Fixture Design Controls Heat and Provides Clean and Even Light Output**

Sleek Plus/Grounded fixtures are manufactured using heavy gauge extruded aluminum, creating great looks and outstanding heat control. These are the thinnest linkable fixtures on the market today. While all linkable fixtures provide some dark areas between interconnected fixtures, the Sleek Plus/Grounded tight-fit joiner and slim end-cap (only 1/2") create the best overlap of lamp output available, assuring only the least noticeable area of darkness produced by any similar fixture type. The special end-cap is built with a positive lamp lock for safety. Protecting the lamp is a carefully designed ribbed acrylic lens that distributes light output with the highest efficiency and quality of beam control.

### **Reliable Ballasts**

To achieve the best possible performance of ballasts is a challenge that is not easily achieved. One reason is that high quality electronic ballasts are critical for optimal performance, but are especially difficult to design in a 3/4"x3/4" housing. A simple matter of heat is the problem – requiring a complex set of design solutions. To guarantee the best in fixture performance, JESCO has fifty fixtures installed in a testing facility, operating 24 hours a day, 7 days a week, for over 7 years – without a single failure. Sleek Plus/Grounded fixtures use ballasts exceeding the UL standard and the FCC Part 18 Subpart C limits for radiation and conduction emissions. JESCO's soft-start function design maximizes lamp life and allows JESCO to offer as standard a 3-year warranty.

### **Sleek Plus Features UL Listed Connectors and Cables**

The simple fact is that the UL testing for cables and connectors are expensive. Most manufacturers just use unlisted components. JESCO has done the necessary testing others don't to be sure of the installation safety of Sleek Plus/Grounded products. JESCO offers all of this as well as being the only manufacturer to offer as a standard product, a UL listed metal outlet box suitable for commercial hard wire applications.

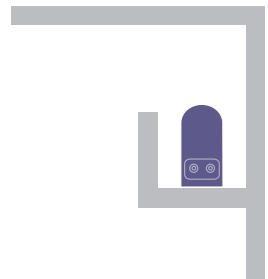
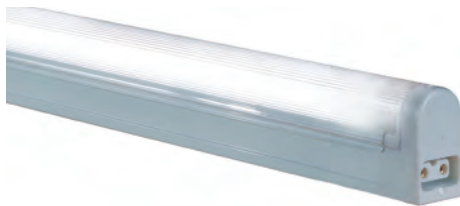
## Feature Comparison: Sleek Plus vs. Other Products

Feature	Sleek Plus	Other Products	Sleek Plus Offers the Users
Branch Circuit	All code approved lighting circuits including 15A and 20A	15A and 20A	Wiring according to lighting circuit load ratings. Not limited to any size circuit.
Grounding	3 wire Hot, Neutral & Ground	2 wire Hot and Neutral	Grounded fixtures required for commercial applications.
Direct Connect Dark Area	Fixtures butt together reducing dark area to <= 1"	About 1.5"	Reduced shadowing when fixtures are connected directly together
Fixture Lengths	(8) T4 and (6) T5 Sizes	(3) T4 and (4) T5 Sizes	More choices for more applications
Shortest Fixture	9-3/8" T4 or T5	10" T4	Fitting into smaller spaces
Longest Fixture	5' T5	5' T5	Use of commercial T5 5' lamp
T4-Lamp Color Temperature	3000K, 4100K, 6400K, Red, Blue, Green and Black	3450K & 4100K	Use for any type of lighting application
T5-Lamp Color Temperature	3000K, 3500K, 4100K, 5000K, 6400K	3000K & 4100K	More lamp types available for use on any type of lighting application
Lamp CRI	> 82	Varies	Use of Tri-Phosphor
Lamp Life (hrs)	T4-16,000; T5-20,000	10,000	Longer lamp life
Fixture Size	T4-3/4"W x 1-1/4" H T5-3/4"W x 1-1/2" H	T4-11/16"W x 1-3/8"H T5-29/32"W x 1-7/16"H	A smaller footprint, that fits into more applications
Switch Option	Optional rocker switch on side of fixture	Rocker switch plugs on end adds ~2"	Rocker switch that does not increase size of installed fixture
Power and Connector Cables	Separate UL listing	N/A	All components having separate UL listings
Right Angle Connectors	Yes	Flexible type	Minimized space required to fit angled space
Mounting Clips	Stainless steel spring clips	Plastic	Clips that will not break when the fixture needs to be taken down
Lamps Supplied	Yes	Sold separately	Fixtures shipped lamped, making less work on installation
Lens Cover	Standard acrylic ribbed lens	Optional clear lens	An acrylic lens that will not yellow and diffuses lamp image
Construction	T4-Aluminum T5-Aluminum	T4-Plastic T5-Aluminum	Aluminum that provides better heat dissipation, longer fixture & lamp life
Metal Hard wire Box	UL Listed Commercial 1-circuit outlet box	Not available	A metal wiring box for commercial applications
Hard Wire Box with Switch	Plastic Hard Wire Box with Switch	Plastic Hard Wire Box with Switch	Needed for use in residential applications
Ballast Type	Electronic	Varies by manufacturer	Electronic filtered, quiet & flicker free
Ballast Warranty	3 years	1 year	Commercial grade fluorescent ballast
FCC Part 18	Yes	Unknown	Tested for in-line and radiated interference
New York City Approval	Yes	Varies by manufacturer	NYC requirement

# SLEEK PLUS ■ T4 – 2-WIRE NON-GROUNDED

## Features:

- Sleek Plus T4 fluorescent fixtures are furnished with replaceable lamps; tight-fit direct connectors; stainless steel mounting clips; and ribbed acrylic lamp covers.
- The housing is made of extruded aluminum, with white enamel painted finish.
- The fixture features a built-in instant-start, no flickering, silent electronic ballast rated AC120V 50-60Hz.
- The ribbed acrylic diffuser lamp cover fits securely on the housing of the fixture with no light leaks, warping or deformed lens.
- The T4 lamps (included with fixtures) are energy efficient, long life with a 16,000 hours rating.
- Additional power supply cables, connecting cables, hard wire boxes and replacement lamps sold separately.
- Sleek Plus are linkable up to 10 units, max 350 watts.
- Compatible with 2-wire components on page 18-19.



\* The information on Lumens is based on cool white lamps.

\*\* The 6W fixture is not available with a Rocker Switch. A cord and plug with switch (SP-PCSW) may be ordered separately. See page 18-19.

Model	Dimensions	Watts	Lumens*	Finish
SP4-6**	9-3/8"L x 3/4"W x 1-1/4"H	6W	480	W
SP4-8	13-1/2"L x 3/4"W x 1-1/4"H	8W	600	W
SP4-12	17-1/2"L x 3/4"W x 1-1/4"H	12W	800	W
SP4-16	19-1/2"L x 3/4"W x 1-1/4"H	16W	1000	W
SP4-20	21"L x 3/4"W x 1-1/4"H	20W	1350	W
SP4-24	34-1/2"L x 3/4"W x 1-1/4"H	24W	2150	W
SP4-28	46-1/4"L x 3/4"W x 1-1/4"H	28W	2900	W

Key Finish: W: White.

## Lamp Options

30	3000K	BU	Blue
41	4100K	GN	Green
64	6400K	RD	Red
		BK	Black

## Ordering Instructions

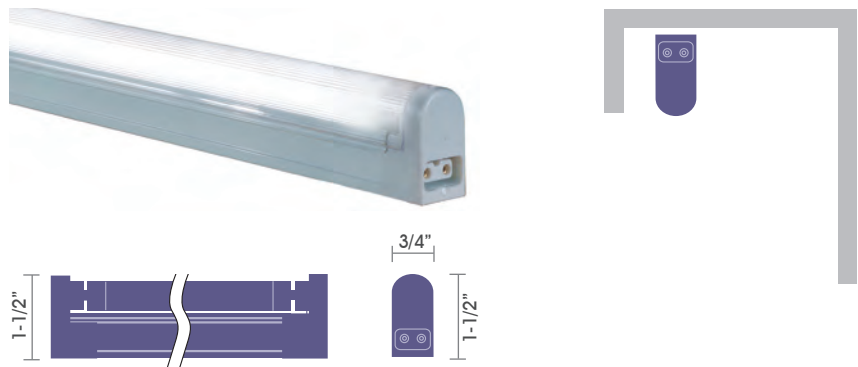
Model    Optional Switch – Add "SW"    /    Lamp Option    –    Finish

Examples: SP4-8SW/30-W (with Rocker Switch)  
 SP4-8/30-W (without Rocker Switch)

# SLEEK PLUS ■ T5 – 2-WIRE NON-GROUNDED

## Features:

- Sleek Plus T5 fluorescent fixtures are furnished with replaceable lamps; tight-fit direct connectors; stainless steel mounting clips; and ribbed acrylic lamp covers.
- The housing is made of extruded aluminum, with white enamel painted finish.
- The fixture features a built-in instant-start, no flickering, silent electronic ballast rated AC 120V 50-60Hz.
- The ribbed acrylic diffuser lamp cover fits securely on the housing of the fixture with no light leaks, warping or deformed lens.
- The T5 lamps (included with fixtures) are energy efficient, long life with a 20,000 hours rating.
- Additional power supply cables, connecting cables, hard wire boxes and replacement lamps sold separately.
- Sleek Plus are linkable up to 10 units, max 350 watts.
- Compatible with 2-wire components on page 18-19.



Model	Dimensions	Watts	Lumens*	Finish
SP5-14	22-3/4"L x 3/4"W x 1-1/2"H	14W	1350	W
SP5-21	34-1/2"L x 3/4"W x 1-1/2"H	21W	2150	W
SP5-28	46-1/4"L x 3/4"W x 1-1/2"H	28W	2900	W

Key Finish: W: White.

\* The information on Lumens is based on cool white lamps.

Lamp Options			
30	3000K	BU	Blue
35	3500K	GN	Green
41	4100K	RD	Red
50	5000K	BK	Black
64	6400K		

## Ordering Instructions

Model / Lamp Option - Finish

Example: SP5-14/30-W

# SLEEK PLUS ■ ADJUSTABLE T4 – 3-WIRE GROUNDED

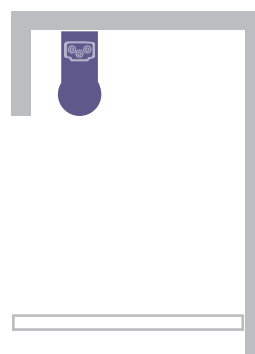
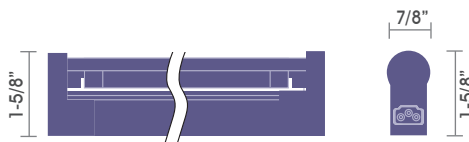
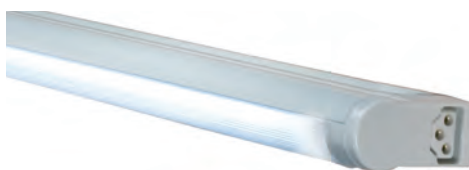
## Features:

- Sleek Plus Adjustable T4 fluorescent fixtures feature an adjustable light shield that provides 360° rotation to direct light where necessary.
- Patent pending fixtures are furnished with replaceable lamps; tight-fit direct connectors; stainless steel mounting clips for vertical or horizontal mount; and ribbed acrylic lamp covers.
- The housing is made of extruded aluminum, anodized silver or white enamel painted finish.
- The fixture features a built-in instant-start, no flickering, silent electronic ballast rated AC 120V 50-60Hz.
- The ribbed acrylic diffuser lamp cover fits securely on the housing of the fixture with no light leaks, warping or deformed lens.
- The T4 lamps (included with fixtures) are energy efficient, long life with a 16,000 hours rating.
- Additional power supply cables, connecting cables, hard wire boxes and replacement lamps sold separately.
- Sleek Plus are linkable up to 10 units, max 350 watts.
- Compatible with 3-wire components on page 18-19.

\* The information on Lumens is based on cool white lamps.

\*\* The 6W fixture is not available with a Rocker Switch.

\*\*\*SG4A-22 only offered with 3000K, 3500K, 5000K and Red lamp.



Model	Dimensions	Watts	Lumens*	Finish
SG4A-6**	9-1/2"L x 7/8"W x 1-5/8"H	6W	480	S, W
SG4A-8	13-3/4"L x 7/8"W x 1-5/8"H	8W	600	S, W
SG4A-12	17-3/4"L x 7/8"W x 1-5/8"H	12W	800	S, W
SG4A-16	19-1/2"L x 7/8"W x 1-5/8"H	16W	1000	S, W
SG4A-20	21-1/4"L x 7/8"W x 1-5/8"H	20W	1350	S, W
SG4A-22***	29-1/4"L x 7/8"W x 1-5/8"H	22W	1850	S, W
SG4A-24	34-5/8"L x 7/8"W x 1-5/8"H	24W	2150	S, W
SG4A-28	46-1/2"L x 7/8"W x 1-5/8"H	28W	2900	S, W

Key Finish: S: Silver; W: White.

## Lamp Options

30	3000K	BU	Blue
41	4100K	GN	Green
64	6400K	RD	Red
		BK	Black

## Ordering Instructions

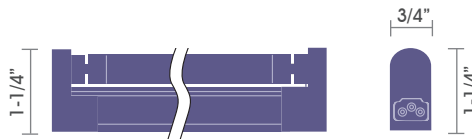
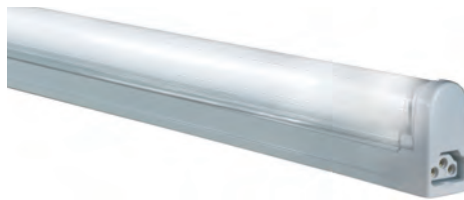
Model  Optional Switch – Add "SW"  / Lamp Option  – Finish

Examples: SG4A-8SW/30-W (with Rocker Switch)  
SG4A-8/30-W (without Rocker Switch)

# SLEEK PLUS ■ T4 – 3-WIRE GROUNDED

## Features:

- Sleek Plus T4 fluorescent fixtures are furnished with replaceable lamps; tight-fit direct connectors; stainless steel mounting clips; and ribbed acrylic lamp covers.
- The housing is made of extruded aluminum, with white enamel painted finish.
- The fixture features a built-in instant-start, no flickering, silent electronic ballast rated AC120V 50-60Hz.
- The ribbed acrylic diffuser lamp cover fits securely on the housing of the fixture with no light leaks, warping or deformed lens.
- The T4 lamps (included with fixtures) are energy efficient, long life with a 16,000 hours rating.
- Additional power supply cables, connecting cables, hard wire boxes and replacement lamps sold separately.
- Sleek Plus are linkable up to 10 units, max 350 watts.
- Compatible with 3-wire components on page 18-19.



- \* The information on Lumens is based on cool white lamps.
- \*\* The 6W fixture is not available with a Rocker Switch.
- \*\*\*SG4-22 only offered with 3000K, 3500K, 5000K and Red lamp.

Model	Dimensions	Watts	Lumens*	Finish
SG4-6**	9-3/8"L x 3/4"W x 1-1/4"H	6W	480	W
SG4-8	13-1/2"L x 3/4"W x 1-1/4"H	8W	600	W
SG4-12	17-1/2"L x 3/4"W x 1-1/4"H	12W	800	W
SG4-16	19-1/2"L x 3/4"W x 1-1/4"H	16W	1000	W
SG4-20	21"L x 3/4"W x 1-1/4"H	20W	1350	W
SG4-22***	29"L x 3/4"W x 1-1/4"H	22W	1850	W
SG4-24	34-1/2"L x 3/4"W x 1-1/4"H	24W	2150	W
SG4-28	46-1/4"L x 3/4"W x 1-1/4"H	28W	2900	W

Key Finish: W: White.

## Lamp Options

30	3000K	BU	Blue
41	4100K	GN	Green
64	6400K	RD	Red
		BK	Black

## Ordering Instructions

Model [ ] Optional Switch – Add "SW" [ ] / Lamp Option [ ] – Finish [ ]

Examples: SG4-8SW/30-W (with Rocker Switch)  
SG4-8/30-W (without Rocker Switch)

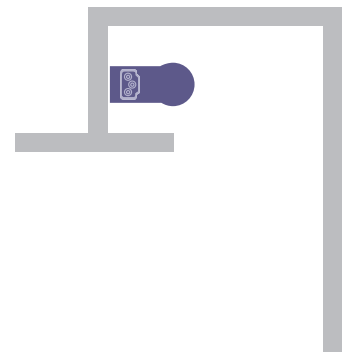
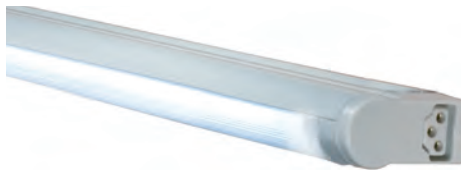
# SLEEK PLUS ■ ADJUSTABLE T5 – 3-WIRE GROUNDED

## Features:

- Sleek Plus Adjustable T5 fluorescent fixtures feature an adjustable light shield that provides 360° rotation to direct light where necessary.
- Patent pending fixtures are furnished with replaceable lamps; tight-fit direct connectors; stainless steel mounting clips for vertical or horizontal mount; and ribbed acrylic lamp covers.
- The housing is made of extruded aluminum, anodized silver or white enamel painted finish.
- Includes a built-in instant-start, no flickering, silent electronic ballast rated AC120V 50-60Hz.
- The ribbed acrylic diffuser lamp cover fits securely on the housing of the fixture with no light leaks, warping or deformed lens.
- The T5 lamps (included with fixtures) are energy efficient, long life with a 20,000 hours rating.
- Additional power supply cables, connecting cables, hard wire boxes and replacement lamps sold separately.
- Sleek Plus are linkable up to 10 units, max 350 watts.
- Compatible with 3-wire components on page 18-19.

\* The information on Lumens is based on cool white lamps.

\*\* The 6W and 8W fixtures are not available with a Rocker Switch.



Model	Dimensions	Watts	Lumens*	Finish
SG5A-6**	9-1/2"L x 7/8"W x 1-5/8"H	6W	480	S, W
SG5A-8**	12-1/2"L x 7/8"W x 1-5/8"H	8W	600	S, W
SG5A-14	22-7/8"L x 7/8"W x 1-5/8"H	14W	1350	S, W
SG5A-21	34-5/8"L x 7/8"W x 1-5/8"H	21W	2150	S, W
SG5A-28	46-1/2"L x 7/8"W x 1-5/8"H	28W	2900	S, W
SG5A-35	58-1/4"L x 7/8"W x 1-5/8"H	35W	3650	S, W

Key Finish: S: Silver; W: White.

## Lamp Options

30	3000K	BU	Blue
35	3500K	GN	Green
41	4100K	RD	Red
50	5000K	BK	Black
64	6400K		

## Ordering Instructions

Model [ ] Optional Switch – Add "SW" [ ] / Lamp Option [ ] – Finish [ ]

Examples: SG5A-14SW/30-W (with Rocker Switch)  
SG5A-14/30-W (without Rocker Switch)

# SLEEK PLUS ■ T5 – 3-WIRE GROUNDED

## Features:

- Sleek Plus T5 fluorescent fixtures are furnished with replaceable lamps; tight-fit direct connectors; stainless steel mounting clips; and ribbed acrylic lamp covers.
- The housing is made of extruded aluminum, with white enamel painted finish.
- The fixture features a built-in instant-start, no flickering, silent electronic ballast rated AC 120V 50-60Hz.
- The ribbed acrylic diffuser lamp cover fits securely on the housing of the fixture with no light leaks, warping or deformed lens.
- The T5 lamps (included with fixtures) are energy efficient, long life with a 20,000 hours rating.
- Additional power supply cables, connecting cables, hard wire boxes and replacement lamps sold separately.
- Sleek Plus are linkable up to 10 units, max 350 watts.
- Compatible with 3-wire components on page 18-19.



Model	Dimensions	Watts	Lumens*	Finish
SG5-6**	9-3/8"L x 3/4"W x 1-1/2"H	6W	480	W
SG5-8**	12-3/8"L x 3/4"W x 1-1/2"H	8W	600	W
SG5-14	22-3/4"L x 3/4"W x 1-1/2"H	14W	1350	W
SG5-21	34-1/2"L x 3/4"W x 1-1/2"H	21W	2150	W
SG5-28	46-1/4"L x 3/4"W x 1-1/2"H	28W	2900	W
SG5-35	58"L x 3/4"W x 1-1/2"H	35W	3650	W

Key Finish: W: White.

\* The information on Lumens is based on cool white lamps.

\*\* The 6W and 8W fixtures are not available with a Rocker Switch.

## Lamp Options

30	3000K	BU	Blue
35	3500K	GN	Green
41	4100K	RD	Red
50	5000K	BK	Black
64	6400K		

## Ordering Instructions

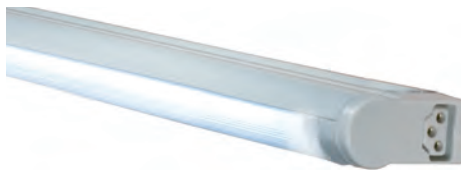
Model [ ] Optional Switch – Add "SW" [ ] / Lamp Option [ ] – Finish [ ]

Examples: SG5-14SW/30-W (with Rocker Switch)  
SG5-14/30-W (without Rocker Switch)

# SLEEK PLUS ■ ADJUSTABLE HIGH OUTPUT T5 – 3-WIRE GROUNDING

## Features:

- Sleek Plus Adjustable T5 HO fluorescent fixtures feature an adjustable light shield that provides 360° rotation to direct light where necessary.
- Patent pending fixtures are furnished with replace-able lamps; tight-fit direct connectors; stainless steel mounting clips for vertical or horizontal mount; and ribbed acrylic lamp covers.
- The housing is made of extruded aluminum, anodized silver or white enamel painted finish.
- The fixture features a built-in instant-start, no flickering, silent electronic ballast rated AC 120V 50-60Hz.
- The ribbed acrylic diffuser lamp cover fits securely on the housing of the fixture with no light leaks, warping or deformed lens.
- The High Output T5 lamps (included with fixtures) offer increased light output—up to 70% more Lumens than standard T5 lamps.
- High Output T5 lamps are energy efficient, long life with a 20,000 hours rating.
- Additional power supply cables, connecting cables, hard wire boxes and replacement lamps sold separately.
- Sleek Plus is linkable up to 10 units, max 350 watts.
- Compatible with 3-wire components on page 18-19.



Model	Dimensions	Watts	Lumens*	Finish
SG5AHO-24	22-7/8"L x 7/8"W x 1-7/8"H	24W	2200	S, W
SG5AHO-39	34-5/8"L x 7/8"W x 1-7/8"H	39W	3500	S, W
SG5AHO-54	46-1/2"L x 7/8"W x 1-7/8"H	54W	5000	S, W

Key Finish: S: Silver; W: White.

\* The information on Lumens is based on cool white lamps.

## Lamp Options

30	3000K	BU	Blue
35	3500K	GN	Green
41	4100K	RD	Red
50	5000K		
64	6400K		

## Ordering Instructions

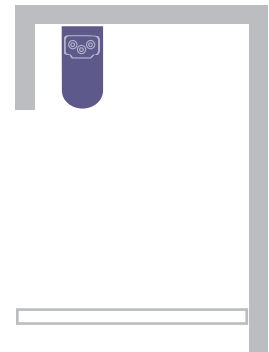
Model  Optional Switch – Add "SW"  / Lamp Option  – Finish

Examples: SG5AHO-24SW/30-W (with Rocker Switch)  
SG5AHO-24/30-W (without Rocker Switch)

# SLEEK PLUS ■ HIGH OUTPUT T5 – 3-WIRE GROUNDED

## Features:

- Sleek Plus T5 HO fluorescent fixtures are furnished with replace-able lamps; tight-fit direct connectors; stainless steel mounting clips; and ribbed acrylic lamp covers.
- The housing is made of extruded aluminum with white enamel painted finish.
- The fixture features a built-in instant-start, no flickering, silent electronic ballast rated AC 120V 50-60Hz.
- The ribbed acrylic diffuser lamp cover fits securely on the housing of the fixture with no light leaks, warping or deformed lens.
- The High Output T5 lamps (included with fixtures) offer increased light output—up to 70% more Lumens than standard T5 lamps.
- High Output T5 lamps are energy efficient, long life with a 20,000 hours rating.
- Additional power supply cables, connecting cables, hard wire boxes and replacement lamps sold separately.
- Sleek Plus is linkable up to 10 units, max 350 watts.
- Compatible with 3-wire components on page 18-19.



Model	Dimensions	Watts	Lumens*	Finish
SG5HO-24	22-5/8"L x 7/8"W x 1-3/4"H	24W	2200	W
SG5HO-39	34-3/8"L x 7/8"W x 1-3/4"H	39W	3500	W
SG5HO-54	46-1/4"L x 7/8"W x 1-3/4"H	54W	5000	W

Key Finish: W: White.

\* The information on Lumens is based on cool white lamps.

Lamp Options			
30	3000K	BU	Blue
35	3500K	GN	Green
41	4100K	RD	Red
50	5000K		
64	6400K		

## Ordering Instructions

Model      Optional Switch – Add "SW"      /      Lamp Option      –      Finish

Examples: SG5HO-24SW/30-W (with Rocker Switch)  
 SG5HO-24/30-W (without Rocker Switch)

# SLEEK PLUS ■ ADJUSTABLE 24V LOW VOLTAGE T5 – 3-WIRE GROUNDED

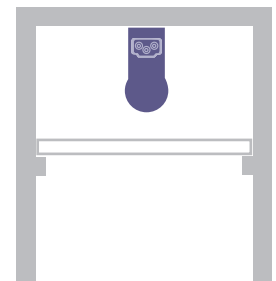
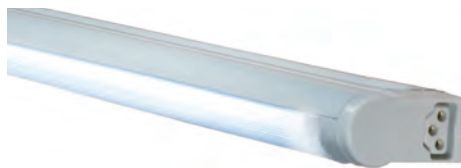
## Features:

- Sleek Plus Adjustable T5 LV fluorescent fixtures feature an adjustable light shield that provides 360° rotation to direct light where necessary.
- Suitable for Low Voltage applications.
- Patent pending fixtures are furnished with replaceable lamps; tight-fit direct connectors; stainless steel mounting clips for vertical or horizontal mount; and ribbed acrylic lamp covers.
- The housing is made of extruded aluminum, with white enamel painted finish.
- The fixture features a built-in instant-start, no flickering, silent electronic ballast rated AC 24V 50-60Hz.
- The ribbed acrylic diffuser lamp cover fits securely on the housing of the fixture with no light leaks, warping or deformed lens.
- The T5 lamps (included with fixtures) are energy efficient, long life with a 20,000 hours rating.
- Additional power supply cables, connecting cables, hard wire boxes and replacement lamps sold separately.
- Sleek Plus is linkable up to 10 units, 350 watts (max).
- Compatible with 3-wire components on page 18-19.

Integrated 24V ballast operates a standard T5 fluorescent with 24V input. For remote 120V/24V transformer, consult factory.

### Lamp Options

30	3000K	BU	Blue
35	3500K	GN	Green
41	4100K	RD	Red
50	5000K	BK	Black
64	6400K		



Model	Dimensions	Watts	Lumens*	Finish
SG5ALV-14	22-7/8\"L x 7/8\"W x 1-7/8\"H	14W	1350	W
SG5ALV-21	34-5/8\"L x 7/8\"W x 1-7/8\"H	21W	2150	W
SG5ALV-28	46-1/4\"L x 7/8\"W x 1-7/8\"H	28W	2900	W

Key Finish: W: White.

\* The information on Lumens is based on cool white lamps.

### Ordering Instructions

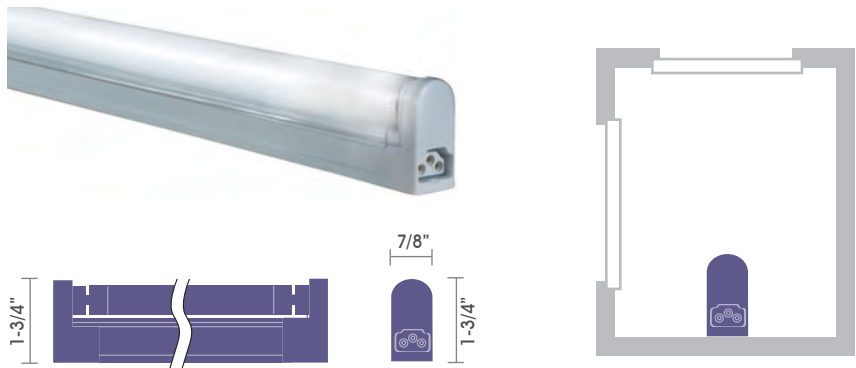
Model / Lamp Option – Finish

Example: SG5ALV-14/30-W

# SLEEK PLUS ■ 24V LOW VOLTAGE T5 – 3-WIRE GROUNDING

## Features:

- Sleek Plus T5 LV fluorescent fixtures are furnished with replaceable lamps; tight-fit direct connectors; stainless steel mounting clips; and ribbed acrylic lamp covers.
- Suitable for Low Voltage applications.
- The housing is made of extruded aluminum with white enamel painted finish.
- The fixture features a built-in instant-start, no flickering, silent electronic ballast rated AC 24V 50-60Hz.
- The ribbed acrylic diffuser lamp cover fits securely on the housing of the fixture with no light leaks, warping or deformed lens.
- The T5 lamps (included with fixtures) are energy efficient, long life with a 20,000 hours rating.
- Additional power supply cables, connecting cables, hard wire boxes and replacement lamps sold separately.
- Sleek Plus is linkable up to 10 units, 350 watts (max).
- Compatible with 3-wire components on page 18-19.



Integrated 24V ballast operates a standard T5 fluorescent with 24V input. For remote 120V/24V transformer, consult factory.

Lamp Options			
30	3000K	BU	Blue
35	3500K	GN	Green
41	4100K	RD	Red
50	5000K	BK	Black
64	6400K		

Model	Dimensions	Watts	Lumens*	Finish
SG5LV-14	22-5/8"L x 7/8"W x 1-3/4"H	14W	1350	W
SG5LV-21	34-3/8"L x 7/8"W x 1-3/4"H	21W	2150	W
SG5LV-28	46-1/4"L x 7/8"W x 1-3/4"H	28W	2900	W

Key Finish: W: White.

\* The information on Lumens is based on cool white lamps.

## Ordering Instructions

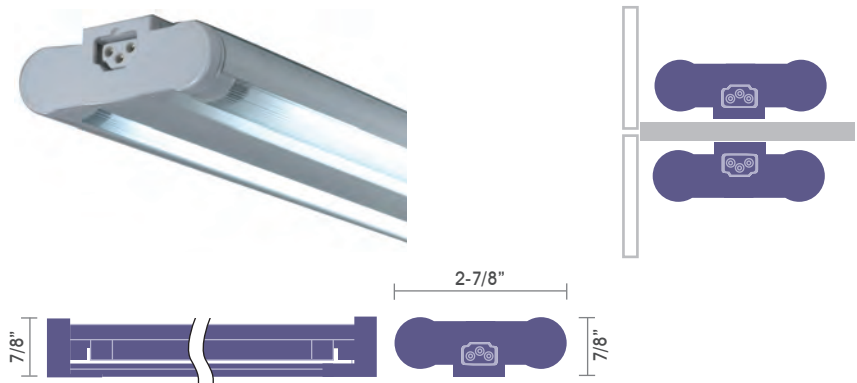
Model / Lamp Option – Finish

Example: SG5LV-14/30-W

# SLEEK PLUS ■ TWIN ADJUSTABLE T5 – 3-WIRE GROUNDED

## Features:

- Sleek Plus Twin Adjustable T5 fluorescent fixtures feature an adjustable light shield that provides 360° rotation to direct light where necessary.
- Patent pending fixtures are furnished with replaceable lamps; tight-fit direct connectors; stainless steel mounting clips; and ribbed lamp covers.
- The housing is made of extruded aluminum with anodized silver or white enamel paint finish.
- The fixture features a built-in instant-start, no flickering, silent electronic ballast rated AC 120V 50-60Hz.
- The ribbed acrylic diffuser lamp cover fits securely on the housing of the fixture with no light leaks, warping or deformed lens.
- The T5 lamps (included with fixtures) are energy efficient, long life with a 20,000 hours rating.
- Additional power supply cables, connecting cables, hard wire boxes and replacement lamps sold separately.
- Sleek Plus are linkable up to 10 units, max 350 watts.
- Compatible with 3-wire components on page 18-19.



Model	Dimensions	Watts	Lumens*	Finish
SG5AT-14	22-7/8"L x 2-7/8"W x 7/8"H	(2) 14W	1350	S, W
SG5AT-21	34-5/8"L x 2-7/8"W x 7/8"H	(2) 21W	2150	S, W
SG5AT-28	46-1/2"L x 2-7/8"W x 7/8"H	(2) 28W	2900	S, W
SG5AT-35	58-1/4"L x 2-7/8"W x 7/8"H	(2) 35W	3650	S, W

Key Finish: S: Silver; W: White.

\* The information on Lumens is based on cool white lamps.

## Lamp Options

30	3000K	BU	Blue
35	3500K	GN	Green
41	4100K	RD	Red
50	5000K	BK	Black
64	6400K		

## Ordering Instructions

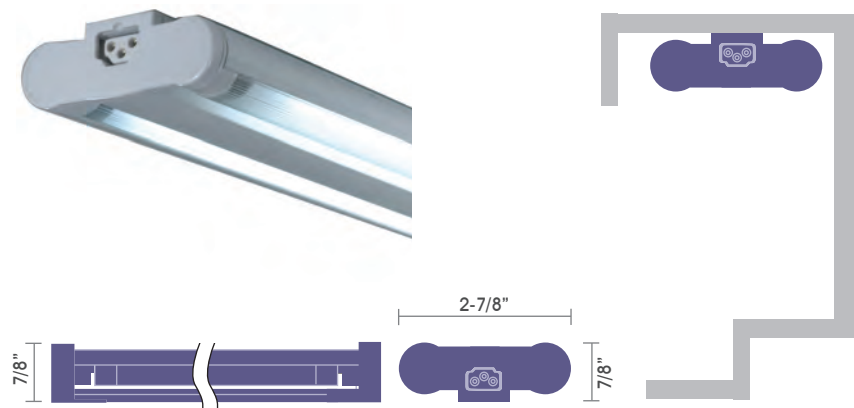
Model / Lamp Option - Finish

Example: SG5AT-14/30-W

# SLEEK PLUS ■ TWIN ADJUSTABLE HIGH OUTPUT T5 – 3-WIRE GROUNDED

## Features:

- Sleek Plus Twin Adjustable T5 HO fluorescent fixtures feature an adjustable light shield that provides 360° rotation to direct light where necessary.
- Patent pending fixtures are furnished with replaceable lamps; tight-fit direct connectors; stainless steel mounting clips; and ribbed lamp covers.
- The housing is made of extruded aluminum with anodized silver or white enamel paint finish.
- The fixture features a built-in instant-start, no flickering, silent electronic ballast rated AC 120V 50-60Hz.
- The ribbed acrylic diffuser lamp cover fits securely on the housing of the fixture with no light leaks, warping or deformed lens.
- The High Output T5 lamps (included with fixtures) offer up to 70% more Lumens than standard T5 lamps and are energy efficient, long life with a 20,000 hours rating.
- Additional power supply cables, connecting cables, hard wire boxes and replacement lamps sold separately.
- Sleek Plus are linkable up to 10 units, max 350 watts.
- Compatible with 3-wire components on page 18-19.



Model	Dimensions	Watts	Lumens*	Finish
SG5ATHO-24	22-7/8"L x 2-7/8"W x 7/8"H	(2) 24W	2200	S, W
SG5ATHO-39	34-5/8"L x 2-7/8"W x 7/8"H	(2) 39W	3500	S, W
SG5ATHO-54	46-1/2"L x 2-7/8"W x 7/8"H	(2) 54W	5000	S, W

Key Finish: S: Silver; W: White.

\* The information on Lumens is based on cool white lamps.

## Lamp Options








30	3000K	BU	Blue
35	3500K	GN	Green
41	4100K	RD	Red
50	5000K		
64	6400K		

## Ordering Instructions







Model / Lamp Option - Finish

Example: SG5ATHO-24/30-W

## SLEEK PLUS ■ ACCESSORIES & COMPONENTS

	Description	2-Wire Model	3-Wire Model
	Direct Connector	SP-DC	SG-DC
	Plastic Hard Wire Box with Control Switch (3-5/8"L x 2-1/4"W x 1-3/8"H)	SP-B	SG-B
	Commercial Grade Metal Hard Wire Box Enables Fixtures to be Controlled by Wall Switch (2-3/4"L x 1-3/4"W x 1-3/4"H)	SP-BM	SG-BM
	Stainless Steel Mounting Clip for Vertical & Horizontal Mount	SG-MC-VH	SG-MC-VH
	Stainless Steel Mounting Clip for Vertical Mount	SG-MC-V	SG-MC-V
	Sleek Plus Power Strip with 6 Outlets Includes (1) Direct Connector (SP-DC) (36"L x 7/8"W x 7/8"H)	SP-PS3	SG-PS3
	Sleek Plus Power Strip with 12 Outlets Includes (1) Direct Connector (SP-DC) (72"L x 7/8"W x 7/8"H)	SP-PS6	SG-PS6

# SLEEK PLUS ■ ACCESSORIES & COMPONENTS

	Description	2-Wire Model	3-Wire Model
	Connecting Cable 6" 12" 24" 36"	SP-CC6 SP-CC12 SP-CC24 SP-CC36	SG-CC6 SG-CC12 SG-CC24 SG-CC36
	Right Angle Connecting Cable 6" 12" 24" 36"	SP-CC6L SP-CC12L SP-CC24L SP-CC36L	SG-CC6L SG-CC12L SG-CC24L SG-CC36L
	Power Cord & Plug 2' White 6' White 6' Grey 8' White 12' White	2-Prong Plug  SP-PC72-W	3-Prong Plug  SG-PC24-W SG-PC72-W SG-PC72-G SG-PC96-W SG-PC144-W
	6' Power Cord & Plug with Switch	2-Prong Plug SP-PCSW	
	6' Right Angle Power Cord & Plug (From Back)	2-Prong Plug SP-PCL	3-Prong Plug SG-PCL
	6' Right Angle Power Cord & Plug (From Front)	2-Prong Plug SP-PCLL	3-Prong Plug SG-PCLL

## SLEEK PLUS ■ LAMP OPTIONS

- A. T4 – 2-WIRE NON-GROUNDED
- B. T5 – 2-WIRE NON-GROUNDED
- C. ADJUSTABLE T4 – 3-WIRE GROUNDED
- D. T4 – 3-WIRE GROUNDED
- E. ADJUSTABLE T5 – 3-WIRE GROUNDED
- F. T5 – 3-WIRE GROUNDED
- G. ADJUSTABLE HIGH OUTPUT T5 – 3-WIRE GROUNDED
- H. HIGH OUTPUT T5 – 3-WIRE GROUNDED
- I. ADJUSTABLE 24V LOW VOLTAGE T5 – 3-WIRE GROUNDED
- J. 24V LOW VOLTAGE T5 – 3-WIRE GROUNDED
- K. TWIN ADJUSTABLE T5 – 3-WIRE GROUNDED
- L. TWIN ADJUSTABLE HIGH OUTPUT T5 – 3-WIRE GROUNDED

Lamp	A	B	C	D	E	F	G	H	I	J	K	L
<b>30</b> 3000K	●	●	●	●	●	●	●	●	●	●	●	●
<b>35</b> 3500K		●			●	●	●	●	●	●	●	●
<b>41</b> 4100K	●	●	●	●	●	●	●	●	●	●	●	●
<b>50</b> 5000K		●			●	●	●	●	●	●	●	●
<b>64</b> 6400K	●	●	●	●	●	●	●	●	●	●	●	●
<b>BK</b> Black	●	●	●	●	●	●			●	●	●	
<b>BU</b> Blue	●	●	●	●	●	●	●	●	●	●	●	●
<b>GN</b> Green	●	●	●	●	●	●	●	●	●	●	●	●
<b>RD</b> Red	●	●	●	●	●	●	●	●	●	●	●	●

# SLEEK PLUS ■ REPLACEMENT T4 FLUORESCENT LAMPS

## T4



**Average Life:** 16,000 Hours

**Burning Position:** Any

**Color Temperature:**

3000K Warm White (Soft White)

4100K Cool White

6400K Daylight White

UV lamps available – Consult factory.

Sleek Plus fixtures are shipped with lamps installed. For replacements, or for special colors, orders can be placed at JESCO using the listed model numbers.

Model	Volts	Watts	Color Temp	Lumens	CRI	MOL
SL4-L6/30	120V	6W	3000K	480	82+	1/2"Ø x 9"
SL4-L6/41	120V	6W	4100K	480	82+	1/2"Ø x 9"
SL4-L6/64	120V	6W	6400K	480	82+	1/2"Ø x 9"
SL4-L6/RD	120V	6W	Red	480	82+	1/2"Ø x 9"
SL4-L6/BU	120V	6W	Blue	480	82+	1/2"Ø x 9"
SL4-L6/GN	120V	6W	Green	480	82+	1/2"Ø x 9"
SL4-L6/BK	120V	6W	Black	480	82+	1/2"Ø x 9"
SL4-L8/30	120V	8W	3000K	600	82+	1/2"Ø x 13-1/8"
SL4-L8/41	120V	8W	4100K	600	82+	1/2"Ø x 13-1/8"
SL4-L8/64	120V	8W	6400K	600	82+	1/2"Ø x 13-1/8"
SL4-L8/RD	120V	8W	Red	600	82+	1/2"Ø x 13-1/8"
SL4-L8/BU	120V	8W	Blue	600	82+	1/2"Ø x 13-1/8"
SL4-L8/GN	120V	8W	Green	600	82+	1/2"Ø x 13-1/8"
SL4-L8/BK	120V	8W	Black	600	82+	1/2"Ø x 13-1/8"
SL4-L12/30	120V	12W	3000K	800	82+	1/2"Ø x 17"
SL4-L12/41	120V	12W	4100K	800	82+	1/2"Ø x 17"
SL4-L12/64	120V	12W	6400K	800	82+	1/2"Ø x 17"
SL4-L12/RD	120V	12W	Red	800	82+	1/2"Ø x 17"
SL4-L12/BU	120V	12W	Blue	800	82+	1/2"Ø x 17"
SL4-L12/GN	120V	12W	Green	800	82+	1/2"Ø x 17"
SL4-L12/BK	120V	12W	Black	800	82+	1/2"Ø x 17"
SL4-L16/30	120V	16W	3000K	1000	82+	1/2"Ø x 18-3/4"
SL4-L16/41	120V	16W	4100K	1000	82+	1/2"Ø x 18-3/4"
SL4-L16/64	120V	16W	6400K	1000	82+	1/2"Ø x 18-3/4"
SL4-L16/RD	120V	16W	Red	1000	82+	1/2"Ø x 18-3/4"
SL4-L16/BU	120V	16W	Blue	1000	82+	1/2"Ø x 18-3/4"
SL4-L16/GN	120V	16W	Green	1000	82+	1/2"Ø x 18-3/4"
SL4-L16/BK	120V	16W	Black	1000	82+	1/2"Ø x 18-3/4"
SL4-L20/30	120V	20W	3000K	1350	82+	1/2"Ø x 20-1/2"
SL4-L20/41	120V	20W	4100K	1350	82+	1/2"Ø x 20-1/2"
SL4-L20/64	120V	20W	6400K	1350	82+	1/2"Ø x 20-1/2"
SL4-L20/RD	120V	20W	Red	1350	82+	1/2"Ø x 20-1/2"
SL4-L20/BU	120V	20W	Blue	1350	82+	1/2"Ø x 20-1/2"
SL4-L20/GN	120V	20W	Green	1350	82+	1/2"Ø x 20-1/2"
SL4-L20/BK	120V	20W	Black	1350	82+	1/2"Ø x 20-1/2"
SL4-L22/30	120V	22W	3000K	1850	82+	1/2"Ø x 28"
SL4-L22/35	120V	22W	3500K	1850	82+	1/2"Ø x 28"
SL4-L22/50	120V	22W	5000K	1850	82+	1/2"Ø x 28"
SL4-L22/RD	120V	22W	Red	1850	82+	1/2"Ø x 28"
SL4-L24/30	120V	24W	3000K	2150	82+	1/2"Ø x 34"
SL4-L24/41	120V	24W	4100K	2150	82+	1/2"Ø x 34"
SL4-L24/64	120V	24W	6400K	2150	82+	1/2"Ø x 34"
SL4-L24/RD	120V	24W	Red	2150	82+	1/2"Ø x 34"
SL4-L24/BU	120V	24W	Blue	2150	82+	1/2"Ø x 34"
SL4-L24/GN	120V	24W	Green	2150	82+	1/2"Ø x 34"
SL4-L24/BK	120V	24W	Black	2150	82+	1/2"Ø x 34"
SL4-L28/30	120V	28W	3000K	2900	82+	1/2"Ø x 45-3/4"
SL4-L28/41	120V	28W	4100K	2900	82+	1/2"Ø x 45-3/4"
SL4-L28/64	120V	28W	6400K	2900	82+	1/2"Ø x 45-3/4"
SL4-L28/RD	120V	28W	Red	2900	82+	1/2"Ø x 45-3/4"
SL4-L28/BU	120V	28W	Blue	2900	82+	1/2"Ø x 45-3/4"
SL4-L28/GN	120V	28W	Green	2900	82+	1/2"Ø x 45-3/4"
SL4-L28/BK	120V	28W	Black	2900	82+	1/2"Ø x 45-3/4"

# SLEEK PLUS ■ REPLACEMENT T5 FLUORESCENT LAMPS

## T5



**Average Life:** 20,000 Hours

**Burning Position:** Any

**Color Temperature:**

3000K Warm White (Soft White)  
 3500K Natural White  
 4100K Cool White  
 5000K Designer White  
 6400K Daylight White

UV lamps available – Consult factory.

Sleek Plus fixtures are shipped with lamps installed. For replacements, or for special colors, orders can be placed at JESCO using the listed model numbers.

Model	Volts	Watts	Color Temp	Lumens	CRI	MOL
SL5-L6/30	120V	6W	3000K	480	82+	5/8"Ø x 9"
SL5-L6/35	120V	6W	3500K	480	82+	5/8"Ø x 9"
SL5-L6/41	120V	6W	4100K	480	82+	5/8"Ø x 9"
SL5-L6/50	120V	6W	5000K	480	82+	5/8"Ø x 9"
SL5-L6/64	120V	6W	6400K	480	82+	5/8"Ø x 9"
SL5-L6/RD	120V	6W	Red	480	82+	5/8"Ø x 9"
SL5-L6/BU	120V	6W	Blue	480	82+	5/8"Ø x 9"
SL5-L6/GN	120V	6W	Green	480	82+	5/8"Ø x 9"
SL5-L6/BK	120V	6W	Black	480	82+	5/8"Ø x 9"
SL5-L8/30	120V	8W	3000K	600	82+	5/8"Ø x 12"
SL5-L8/35	120V	8W	3500K	600	82+	5/8"Ø x 12"
SL5-L8/41	120V	8W	4100K	600	82+	5/8"Ø x 12"
SL5-L8/50	120V	8W	5000K	600	82+	5/8"Ø x 12"
SL5-L8/64	120V	8W	6400K	600	82+	5/8"Ø x 12"
SL5-L8/RD	120V	8W	Red	600	82+	5/8"Ø x 12"
SL5-L8/BU	120V	8W	Blue	600	82+	5/8"Ø x 12"
SL5-L8/GN	120V	8W	Green	600	82+	5/8"Ø x 12"
SL5-L8/BK	120V	8W	Black	600	82+	5/8"Ø x 12"
SL5-L14/30	120V	14W	3000K	1350	82+	5/8"Ø x 22-1/4"
SL5-L14/35	120V	14W	3500K	1350	82+	5/8"Ø x 22-1/4"
SL5-L14/41	120V	14W	4100K	1350	82+	5/8"Ø x 22-1/4"
SL5-L14/50	120V	14W	5000K	1350	82+	5/8"Ø x 22-1/4"
SL5-L14/64	120V	14W	6400K	1350	82+	5/8"Ø x 22-1/4"
SL5-L14/RD	120V	14W	Red	1350	82+	5/8"Ø x 22-1/4"
SL5-L14/BU	120V	14W	Blue	1350	82+	5/8"Ø x 22-1/4"
SL5-L14/GN	120V	14W	Green	1350	82+	5/8"Ø x 22-1/4"
SL5-L14/BK	120V	14W	Black	1350	82+	5/8"Ø x 22-1/4"
SL5-L21/30	120V	21W	3000K	2150	82+	5/8"Ø x 36"
SL5-L21/35	120V	21W	3500K	2150	82+	5/8"Ø x 36"
SL5-L21/41	120V	21W	4100K	2150	82+	5/8"Ø x 36"
SL5-L21/50	120V	21W	5000K	2150	82+	5/8"Ø x 36"
SL5-L21/64	120V	21W	6400K	2150	82+	5/8"Ø x 36"
SL5-L21/RD	120V	21W	Red	2150	82+	5/8"Ø x 36"
SL5-L21/BU	120V	21W	Blue	2150	82+	5/8"Ø x 36"
SL5-L21/GN	120V	21W	Green	2150	82+	5/8"Ø x 36"
SL5-L21/BK	120V	21W	Black	2150	82+	5/8"Ø x 36"
SL5-L28/30	120V	28W	3000K	2900	82+	5/8"Ø x 48"
SL5-L28/35	120V	28W	3500K	2900	82+	5/8"Ø x 48"
SL5-L28/41	120V	28W	4100K	2900	82+	5/8"Ø x 48"
SL5-L28/50	120V	28W	5000K	2900	82+	5/8"Ø x 48"
SL5-L28/64	120V	28W	6400K	2900	82+	5/8"Ø x 48"
SL5-L28/RD	120V	28W	Red	2900	82+	5/8"Ø x 48"
SL5-L28/BU	120V	28W	Blue	2900	82+	5/8"Ø x 48"
SL5-L28/GN	120V	28W	Green	2900	82+	5/8"Ø x 48"
SL5-L28/BK	120V	28W	Black	2900	82+	5/8"Ø x 48"
SL5-L35/30	120V	35W	3000K	3650	82+	5/8"Ø x 60"
SL5-L35/35	120V	35W	3500K	3650	82+	5/8"Ø x 60"
SL5-L35/41	120V	35W	4100K	3650	82+	5/8"Ø x 60"
SL5-L35/50	120V	35W	5000K	3650	82+	5/8"Ø x 60"
SL5-L35/64	120V	35W	6400K	3650	82+	5/8"Ø x 60"
SL5-L35/RD	120V	35W	Red	3650	82+	5/8"Ø x 60"
SL5-L35/BU	120V	35W	Blue	3650	82+	5/8"Ø x 60"
SL5-L35/GN	120V	35W	Green	3650	82+	5/8"Ø x 60"
SL5-L35/BK	120V	35W	Black	3650	82+	5/8"Ø x 60"

# SLEEK PLUS ■ REPLACEMENT T5 HIGH OUTPUT FLUORESCENT LAMPS

## T5 HO



**Average Life:** 20,000 Hours

**Burning Position:** Any

**Color Temperature:**

3000K Warm White (Soft White)  
 3500K Natural White  
 4100K Cool White  
 5000K Designer White  
 6400K Daylight White

UV lamps available – Consult factory.

Sleek Plus fixtures are shipped with lamps installed. For replacements, or for special colors, orders can be placed at JESCO using the listed model numbers.

Model	Volts	Watts	Color Temp	Lumens	CRI	MOL
SL5-L24HO/30	120V	24W	3000K	2200	82+	5/8"Ø x 22-1/4"
SL5-L24HO/35	120V	24W	3500K	2200	82+	5/8"Ø x 22-1/4"
SL5-L24HO/41	120V	24W	4100K	2200	82+	5/8"Ø x 22-1/4"
SL5-L24HO/50	120V	24W	5000K	2200	82+	5/8"Ø x 22-1/4"
SL5-L24HO/64	120V	24W	6400K	2200	82+	5/8"Ø x 22-1/4"
SL5-L24HO/RD	120V	24W	Red	2200	82+	5/8"Ø x 22-1/4"
SL5-L24HO/BU	120V	24W	Blue	2200	82+	5/8"Ø x 22-1/4"
SL5-L24HO/GN	120V	24W	Green	2200	82+	5/8"Ø x 22-1/4"
SL5-L39HO/30	120V	39W	3000K	3500	82+	5/8"Ø x 36"
SL5-L39HO/35	120V	39W	3500K	3500	82+	5/8"Ø x 36"
SL5-L39HO/41	120V	39W	4100K	3500	82+	5/8"Ø x 36"
SL5-L39HO/50	120V	39W	5000K	3500	82+	5/8"Ø x 36"
SL5-L39HO/64	120V	39W	6400K	3500	82+	5/8"Ø x 36"
SL5-L39HO/RD	120V	39W	Red	3500	82+	5/8"Ø x 36"
SL5-L39HO/BU	120V	39W	Blue	3500	82+	5/8"Ø x 36"
SL5-L39HO/GN	120V	39W	Green	3500	82+	5/8"Ø x 36"
SL5-L54HO/30	120V	54W	3000K	5000	82+	5/8"Ø x 48"
SL5-L54HO/35	120V	54W	3500K	5000	82+	5/8"Ø x 48"
SL5-L54HO/41	120V	54W	4100K	5000	82+	5/8"Ø x 48"
SL5-L54HO/50	120V	54W	5000K	5000	82+	5/8"Ø x 48"
SL5-L54HO/64	120V	54W	6400K	5000	82+	5/8"Ø x 48"
SL5-L54HO/RD	120V	54W	Red	5000	82+	5/8"Ø x 48"
SL5-L54HO/BU	120V	54W	Blue	5000	82+	5/8"Ø x 48"
SL5-L54HO/GN	120V	54W	Green	5000	82+	5/8"Ø x 48"

# INDEX

MODEL NUMBER	PAGE	MODEL NUMBER	PAGE
SG4-6.....	9	SG5AHO-54.....	12
SG4-8.....	9	SG5ATHO-24.....	17
SG4-12.....	9	SG5ATHO-39.....	17
SG4-16.....	9	SG5ATHO-54.....	17
SG4-20.....	9	SG5HO-24.....	13
SG4-22.....	9	SG5HO-39.....	13
SG4-24.....	9	SG5HO-54.....	13
SG4-28.....	9	SG-B.....	18
SG4A-6.....	8	SG-BM.....	18
SG4A-8.....	8	SG-CC6.....	19
SG4A-12.....	8	SG-CC6L.....	19
SG4A-16.....	8	SG-CC12.....	19
SG4A-20.....	8	SG-CC12L.....	19
SG4A-22.....	8	SG-CC24.....	19
SG4A-24.....	8	SG-CC24L.....	19
SG4A-28.....	8	SG-CC36.....	19
SP4-6.....	6	SG-CC36L.....	19
SP4-8.....	6	SG-DC.....	18
SP4-12.....	6	SG-MC-V.....	18
SP4-16.....	6	SG-MC-VH.....	18
SP4-20.....	6	SG-PC24-B.....	19
SP4-24.....	6	SG-PC72-G.....	19
SP4-28.....	6	SG-PC72-W.....	19
SP5-14.....	7	SG-PC96-W.....	19
SP5-21.....	7	SG-PC144-W.....	19
SP5-28.....	7	SG-PCL.....	19
SG5-6.....	11	SG-PCLL.....	19
SG5-8.....	11	SG-PS3.....	18
SG5-14.....	11	SG-PS6.....	18
SG5-21.....	11	SL4.....	21
SG5-28.....	11	SL5.....	22
SG5-35.....	11	SL5/ HO.....	23
SG5A-6.....	10	SP-B.....	18
SG5A-8.....	10	SP-BM.....	18
SG5A-14.....	10	SP-CC6.....	19
SG5A-21.....	10	SP-CC6L.....	19
SG5A-28.....	10	SP-CC12.....	19
SG5A-35.....	10	SP-CC12L.....	19
SG5AT-14.....	16	SP-CC24.....	19
SG5AT-21.....	16	SP-CC24L.....	19
SG5AT-28.....	16	SP-CC36.....	19
SG5AT-35.....	16	SP-CC36L.....	19
SG5ALV-14.....	14	SP-DC.....	18
SG5ALV-21.....	14	SP-PC72-W.....	19
SG5ALV-28.....	14	SP-PCL.....	19
SG5LV-14.....	15	SP-PCLL.....	19
SG5LV-21.....	15	SP-PCSW.....	19
SG5LV-28.....	15	SP-PS3.....	18
SG5AHO-24.....	12	SP-PS6.....	18
SG5AHO-39.....	12		

# JESCO LIGHTING GROUP LITERATURE

## Track Lighting



Low Voltage Monorail  
Quick Adapt System  
Companion Wall Sconces



Series 901/902  
Metal Halide  
Track Lighting



Residential  
&  
Commercial  
Track Lighting



Line Voltage  
Monorail

## Recessed Downlights



Modulinear  
Directional Lighting



Mini Modulinear  
Directional Lighting



Recessed Lighting  
3" and 4" Aperture



Recessed Lighting  
5" and 6" Aperture



Residential  
&  
Commercial  
Downlights

## Decorative



Envisage  
Collection I



Envisage  
Collection II



Envisage III  
Grok Collection



Envisage IV  
Orfeo Collection

## Specialty Lighting



Sleek Plus  
Mini Fluorescent  
Lighting Solutions



Display Lighting  
Solutions



Slim Disks  
Undercabinet &  
Shelf Lighting

## J-LED Lighting Solutions



LED Lighting  
Solutions



Flexible Linear  
Indoor/Outdoor  
Series



LED Indoor  
Shelf & Cove  
Series S301



Illustrated Product  
Guide

## Other



Mini Catalog



Illustrated Product  
Guide



Outdoor



**NEW YORK**

66-25 Traffic Avenue  
Glendale, NY 11385  
Tel. 718.366.3211  
Tel. 800.527.7796  
Fax. 718.366.3646

**LOS ANGELES**

1100 Hatcher Ave, Suite A  
City of Industry, CA 91748  
Tel. 626. 854.8168  
Tel. 866.473.5840  
Fax. 626.854.8172

E-mail: [info@jescolighting.com](mailto:info@jescolighting.com)

[www.jescolighting.com](http://www.jescolighting.com)

JESCO LIGHTING is a UL and ETL Listed company  
© 2006 JESCO LIGHTING. All rights reserved.

LCAT-SLEEK2

**SHOWROOMS**

**NEW YORK**

234 West 30th Street  
New York, NY 10001

**DALLAS**

Dallas Trade Mart #4313  
2100 N. Stemmons Freeway  
Dallas, TX 75207

**LAS VEGAS**

World Market Center  
455 S. Grand Central Pkwy  
Space C-1036  
Las Vegas, NV 89106