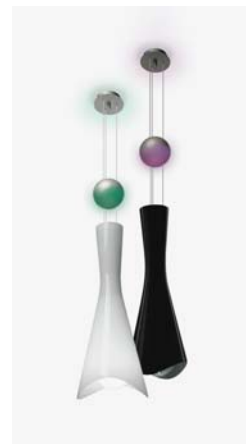


FOR USE UPON RECEIPT — 2011

## **SHI Series 659: A New LED Color-Changing Pendant Light From JESCO**

### **New Product Introduction: Envisage III Grok**

**Lighting Collection, Model SHI Series 659** — unique contemporary-design color-changing LED pendant, that challenges conventional thinking about light and design.



**Design:** LEDS-C4 of Barcelona, Spain, in collaboration with the JESCO Lighting design and engineering team.

**Manufacturer:** JESCO Lighting, Inc.

**Product Applications:** The **Envisage III Grok SHI Series 659** color-changing LED pendant provides nonglare ambient accent, direct/indirect illumination.

**SHI Series 659** can be suspended in a series of two, three or four units in a space, or deployed as individual units hung in different rooms.

**SHI Series 659** works across a range of decorative and architectural interior applications. Striking, memorable installations include hospitality venues in hotels, restaurants, casinos and clubs; boutique retail; healthcare interiors; professional and upscale residential.

**Product Description:** An original design, **SHI Series 659** color-changing LED pendants are characterized by a vertical tapered and flared smooth-edge shape. They offer aesthetical, two-lamp lighting performance with lighting continuity. **SHI Series 659** design makes a statement even when off; then “comes to life” when illuminated. Metal housing elements meld with unusual translucent glass shades and exquisite design detail, for an overall memorable design.

**Construction & Finishes:** **SHI Series 659** color-changing LED pendant is constructed of a matte aluminum ceiling canopy, suspension cable, and a height-adjustable ball-shaped design element on the cable. The opal glass shade is available in gloss black or white. A single 6-watt LED light source provides uplight for accent; remote control for slow color changing or static color; a 100-watt G40 incandescent lamp provides downlight.

**SHI Series 659** meets UL, CUL and CE standards of operation.

Learn more about JESCO products and capabilities by visiting: [www.jescolighting.com](http://www.jescolighting.com).

JESCO Lighting is located at 66-25 Traffic Avenue, Glendale, New York 11385.

Telephone: (718) 366-3211. Fax: (718) 366-3646. E-mail: [sales@jescolighting.com](mailto:sales@jescolighting.com).

EDITOR, FOR MORE INFORMATION, PLEASE CONTACT:

Bill or Nancy Schoenfisch  
SCHOENFISCH INCORPORATED  
336 County Highway 24  
Richfield Springs, New York 13439  
(315) 858-8393/Phone  
(315) 858-9635/Fax  
[primages@aol.com](mailto:primages@aol.com)/E-mail