

DL-FLEX2-CRYSCONN

FLEX2 • POWER FEED OR CONNECTING CABLE



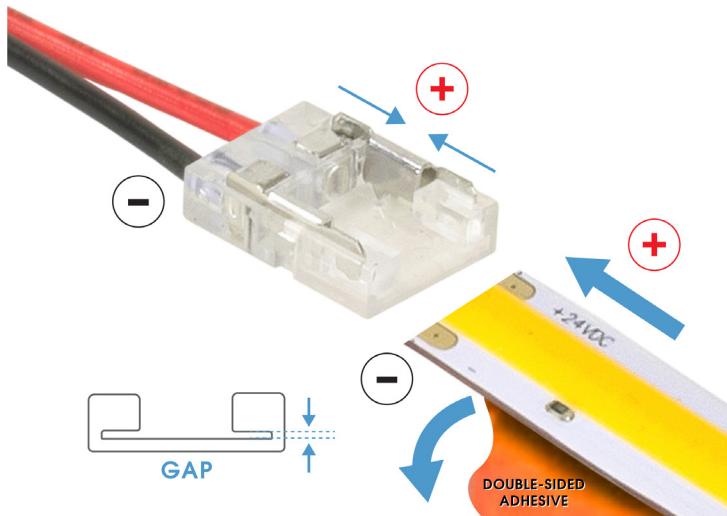
READ AND FOLLOW ALL SAFETY INSTRUCTIONS



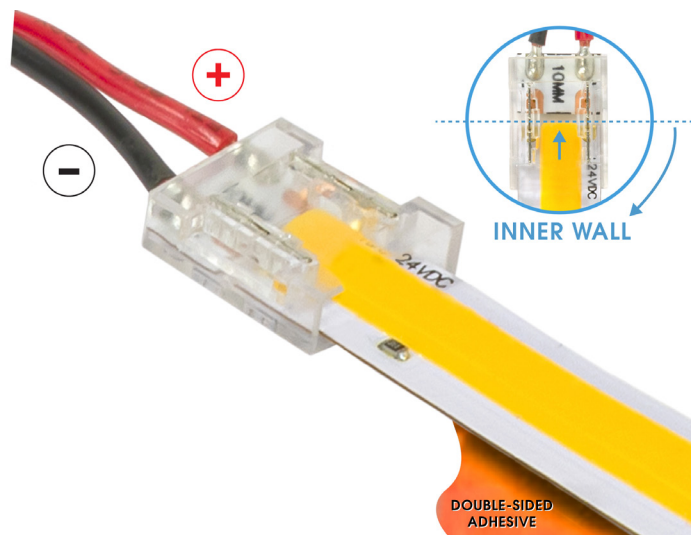
WARNING - RISK OF FIRE AND ELECTRICAL SHOCK. FIXTURE MUST BE INSTALLED BY A QUALIFIED ELECTRICIAN ONLY. FIXTURE IS INTENDED FOR INSTALLATION IN ACCORDANCE WITH THE NATIONAL ELECTRICAL CODE, LOCAL AND FEDERAL SPECIFICATIONS. DISCONNECT POWER AT ELECTRICAL PANEL BEFORE SERVICING. RETAIN THESE INSTRUCTIONS FOR MAINTENANCE REFERENCE.

All electrical connections must be in accordance with local codes, ordinances and the National Electric Code. This product operates on **24V DC**; always confirm the maximum wattage of the linear strip does not exceed the maximum wattage of the circuit it is connected to. If you are unfamiliar with methods of installing electrical wiring, secure the services of a qualified licensed electrician.

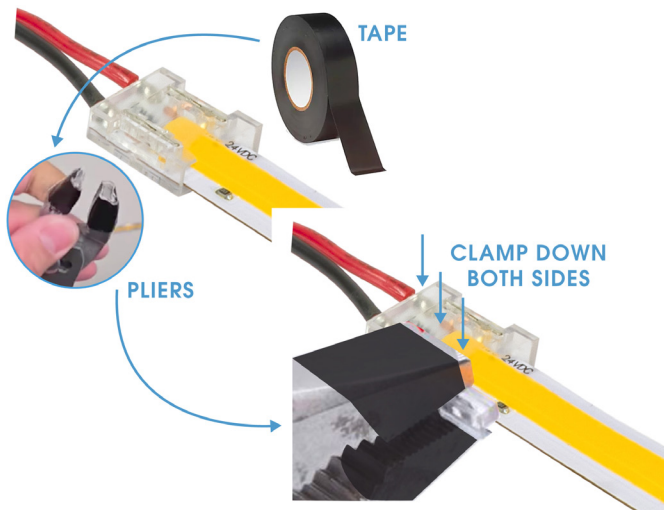
VIDEO
INSTALLATION
AVAILABLE



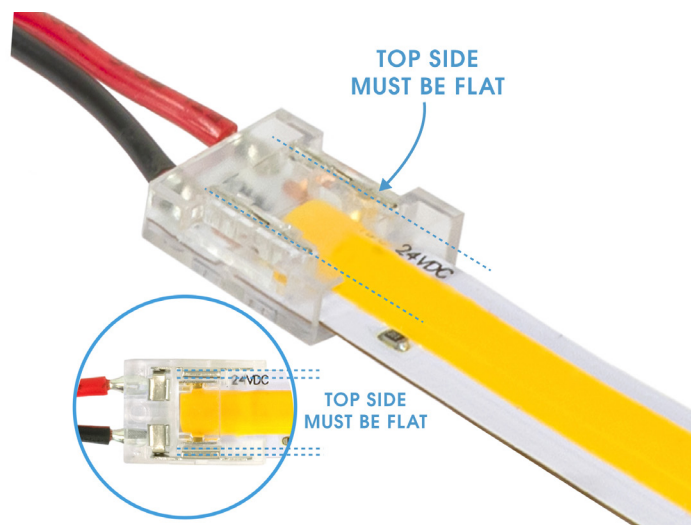
1 IMPORTANT: DOES NOT WORK ON SOLDERED END. BEFORE STARTING, CUT OFF SOLDERED SECTION OF LED STRIP. Peel back about ½" of the double-sided adhesive cover at the back of the LED strip. Then push the strip into the gap, making sure the polarity matches. Red is positive +, and Black is negative -.



2 Make sure the LED strip is pushed all the way in, and the edge of it reaches the connector's inner wall.



3 IMPORTANT: WRAP PLIERS' TIPS WITH TAPE. Clamp down the connector on both sides with pliers. This step is necessary for the conductors' pins to pierce the LED strips' copper pads.



4 Check to see if pins are flush with the CRYSCONN connector. NOTE: Clamp down to level pins as needed.