

DL-AC-FLEX2-LNDB-RGBW

INFINA® 2 AC LED FLEXIBLE LINEAR LIGHTING • DRIVERLESS DUO-BEND RGBW



IMPORTANT SAFETY INFORMATION

Please read and save these instructions. Read carefully before using product. Protect yourself and others by observing all safety information, warnings and cautions. Failure to comply with instructions could result in personal injury and/or damage to product or property. Please retain instruction sheet for future reference.

DO NOT CUT OR SHORTEN INFINA®. DOING SO CAN CAUSE RISK OF ELECTRICAL SHOCK.



READ AND FOLLOW ALL SAFETY INSTRUCTIONS



All electrical connections must be in accordance with local codes, ordinances and the National Electric Code.

This product operates on **120 VAC**; always confirm the maximum wattage of the linear strip does not exceed the maximum wattage of the circuit it is connected to. If you are unfamiliar with methods of installing electrical wiring, secure the services of a qualified licensed electrician.

WARNING: RISK OF FIRE AND SHOCK

- Do not cover this product as the covering may cause the flexible light to overheat and melt or ignite.
- Do not operate with the flexible light while attached to plastic spool or tightly coiled. Excess heat may melt the spool and/or strip light.
- Do not puncture, cut, shorten, or splice the flexible lighting.
- Do not route the cord or flexible lighting cable through walls, doors, windows or any like part of the building structure.
- Do not use if there is any damage to the light or cord insulation. Inspect periodically.
- Do not submerge flexible light in liquids, or use the product in the vicinity of standing water or other liquids.
- Secure this flexible light using only hangers or clips provided. Do not secure this product with staples, nails, or like means that may damage the insulation or permanently attach to the building structure.
- Do not subject flexible lighting to continuous flexing.
- Do not install in cabinets, tanks or enclosures of any kind.
- DO NOT EXCEED THE MAXIMUM NUMBER OF EXTENSIONS OR FLEXIBLE LIGHT LENGTHS PERMITTED BY THE MARKING.

DL-AC-FLEX2-LNDB-RGBW: RATED 120 VOLT AC to LC-AC-1000-INT-HWSPM
4.3 Watt/Foot
MAX 130 Feet

Note: Each 5 feet of connecting cable is equivalent to 1 linear foot of INFINA® linear strip

WARNING

When using outdoor-use portable lighting products, basic safety precautions should always be followed to reduce the risk of fire, electric shock, and personal injury, including the following:

Read All Instructions

- a) Ground Fault Circuit Interrupter (GFCI) protection should be provided on the circuits or outlet to be used for the outdoor use flexible lighting product. Receptacles are available having built-in GFCI protection for this measure of safety.
- b) Use only outdoor extension cords, such as type SW, SOW, STW, STOW, SJW, SJOW, SJTW, or SJTOW. This designation is marked on the wire of the extension cord.



SAVE THESE INSTRUCTIONS

ALL PICTURES SHOWN ARE FOR ILLUSTRATION PURPOSE ONLY, ACTUAL PRODUCT MAY VARY


DL-AC-FLEX2-LNDB-RGBW

INFINA® 2 AC LED FLEXIBLE LINEAR LIGHTING • DRIVERLESS DUO-BEND RGBW




SCHEMATIC: CONTROLLER OPTIONS


(For reference only, not to scale, not for actual installation)



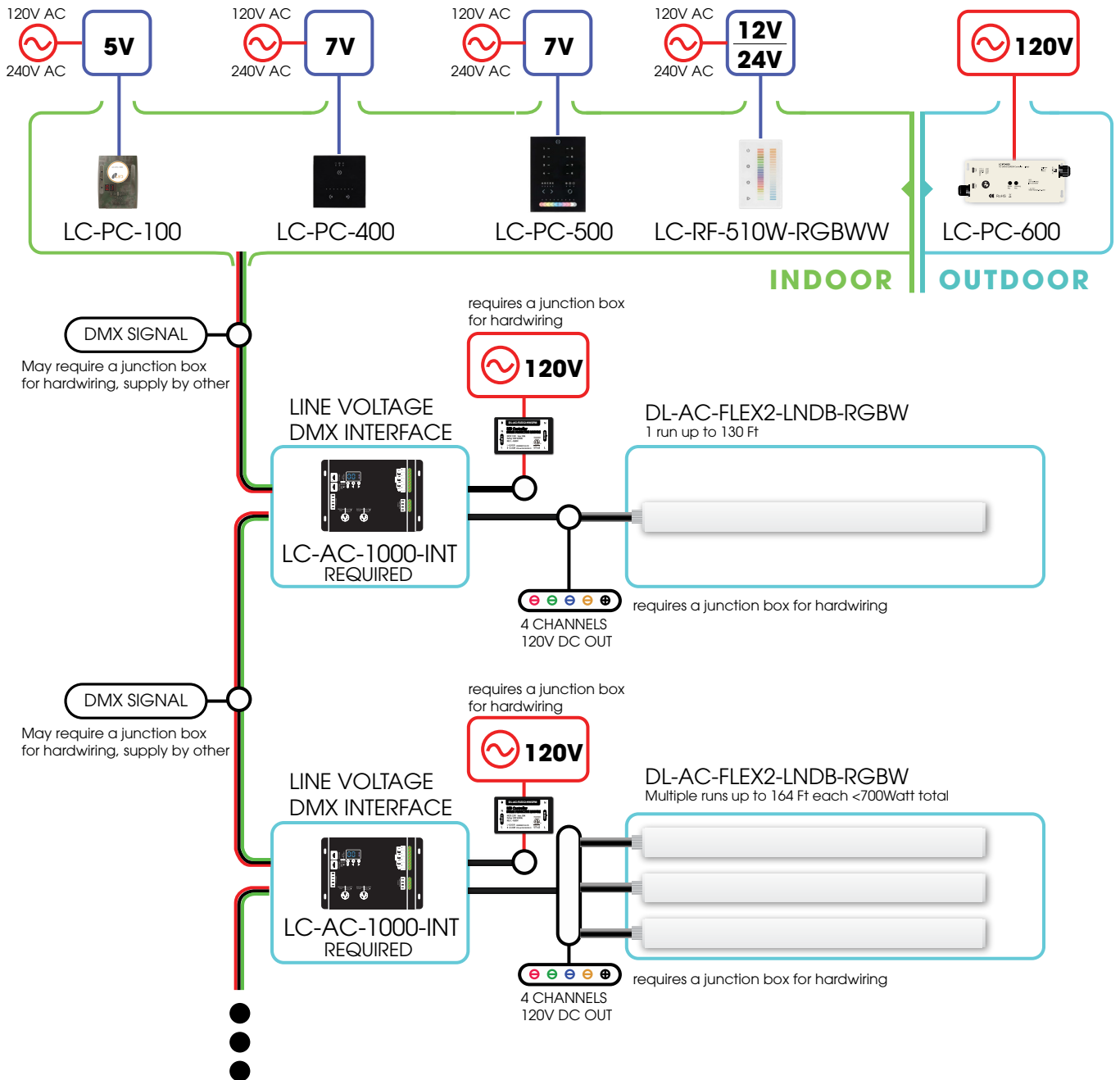
TURN OFF ELECTRICITY
At main fuse box (or circuit breaker box) before beginning installation by switching circuit breaker off or removing fuse. MIN 90° C SUPPLY CONDUCTORS.



CONSULT A QUALIFIED ELECTRICIAN TO ENSURE CORRECT BRANCH CIRCUIT, RATED 120VOLT AC



All electrical connections must be in accordance with local codes, ordinances and the National Electric Code.



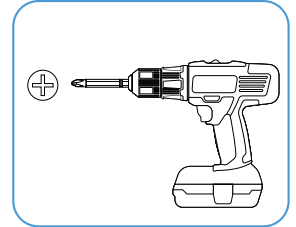
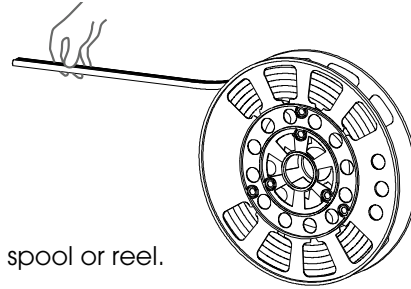
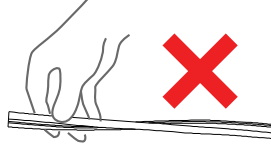
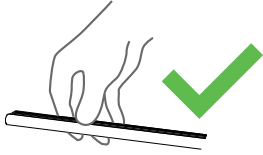
DL-AC-FLEX2-LNDB-RGBW

INFINA® 2 AC LED FLEXIBLE LINEAR LIGHTING • DRIVERLESS DUO-BEND RGBW



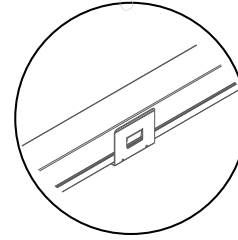
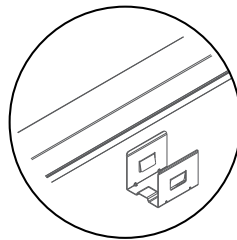
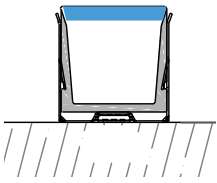
MOUNTING OPTIONS

(For reference only, not to scale, not for actual installation)

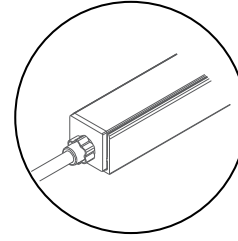
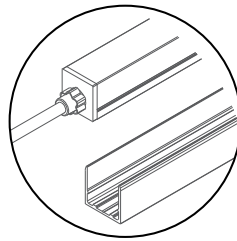
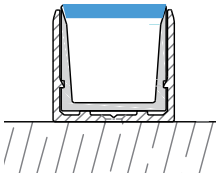


Avoid twisting product when unwinding product from a spool or reel.

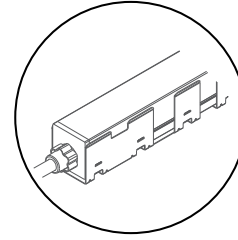
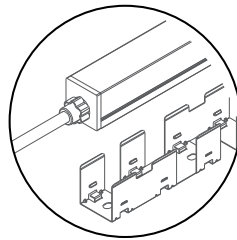
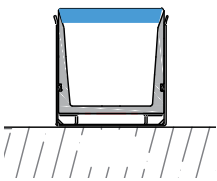
DL-AC-FLEX2-LNDB-RGBW-BR



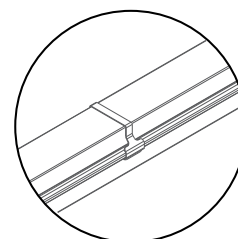
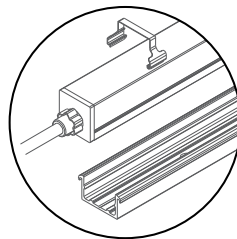
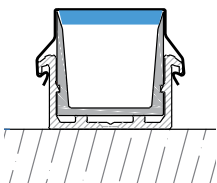
DL-AC-FLEX2-LNDB-RGBW-MC



DL-AC-FLEX2-LNDB-RGBW-CH33-BEND



DL-AC-FLEX2-LNDB-RGBW-CH3



Minimize repeated installation and removal of the product in the metal channel

DL-AC-FLEX2-LNDB-RGBW

INFINA® 2 AC LED FLEXIBLE LINEAR LIGHTING • DRIVERLESS DUO-BEND RGBW



Installation with LC-RF-510W-RGBWW, LC-PC-(100/400/500/600)

TURN OFF ELECTRICITY
At main fuse box (or circuit breaker box) before beginning installation by switching circuit breaker off or removing fuse. MIN 90° C SUPPLY CONDUCTORS.

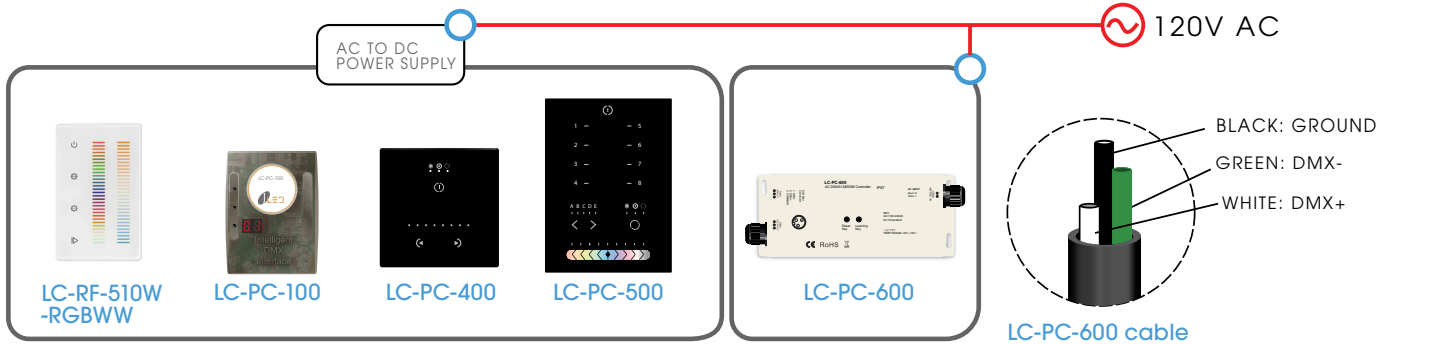
! CONSULT A QUALIFIED ELECTRICIAN TO ENSURE CORRECT BRANCH CIRCUIT. RATED 120VOLT AC

! All electrical connections must be in accordance with local codes, ordinances and the National Electric Code.

HARDWARE (included)



1x SJT CORD STRAIN RELIEF BUSHING

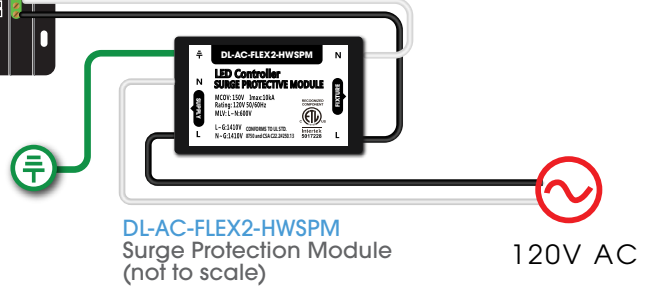
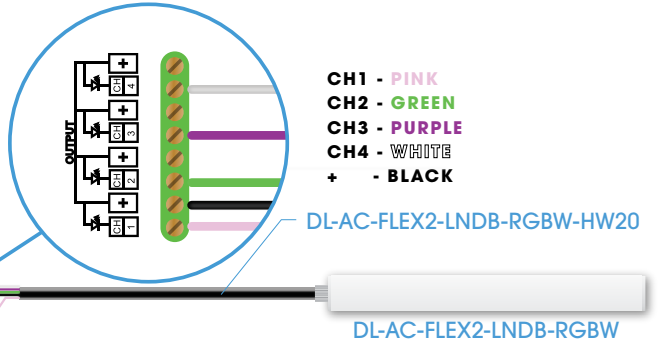


CAT5/6 DMX Connection

1. WHITE ORANGE **DMX+**
 2. ORANGE **DMX-**
 7. WHITE BROWN
 8. BROWN
Wired together **GROUND**
- Wire 3,4,5,6 are not used

3 PIN XLR Connection

1. PIN 1 **GROUND**
2. PIN 2 **DMX-**
3. PIN 3 **DMX+**



1. Connect 120V AC supply wire to DL-AC-FLEX2-HWSPM's input wires. BLACK to BLACK | WHITE to WHITE | GREEN to GROUND
2. Connect DL-AC-FLEX2-HWSPM's output wires to LC-AC-1000-INT's terminal block. BLACK to L, WHITE to N.
3. Connect DMX controller's power supply to 120V AC supply. LC-PC-600 connects directly to 120V AC.
4. Connect DMX controller's DMX output signal wires to either CAT5/6 cable with connector or to 3-PIN XLR connector and plug into LC-AC-1000-INT's associated DMX input port.
5. Secure DL-AC-FLEX2-RGBW-HW20 cable to LC-AC-1000-INT's output terminal block in the following: PINK to CH1 | GREEN to CH2 | PURPLE to CH3 | WHITE to CH4 | BLACK to any + terminal.

DL-AC-FLEX2-LNDB-RGBW

INFINA® 2 AC LED FLEXIBLE LINEAR LIGHTING • DRIVERLESS DUO-BEND RGBW



Installation with LC-RF-510W-RGBWW, LC-PC-(100/400/500/600)

TURN OFF ELECTRICITY
At main fuse box (or circuit breaker box) before beginning installation by switching circuit breaker off or removing fuse. MIN 90° C SUPPLY CONDUCTORS.

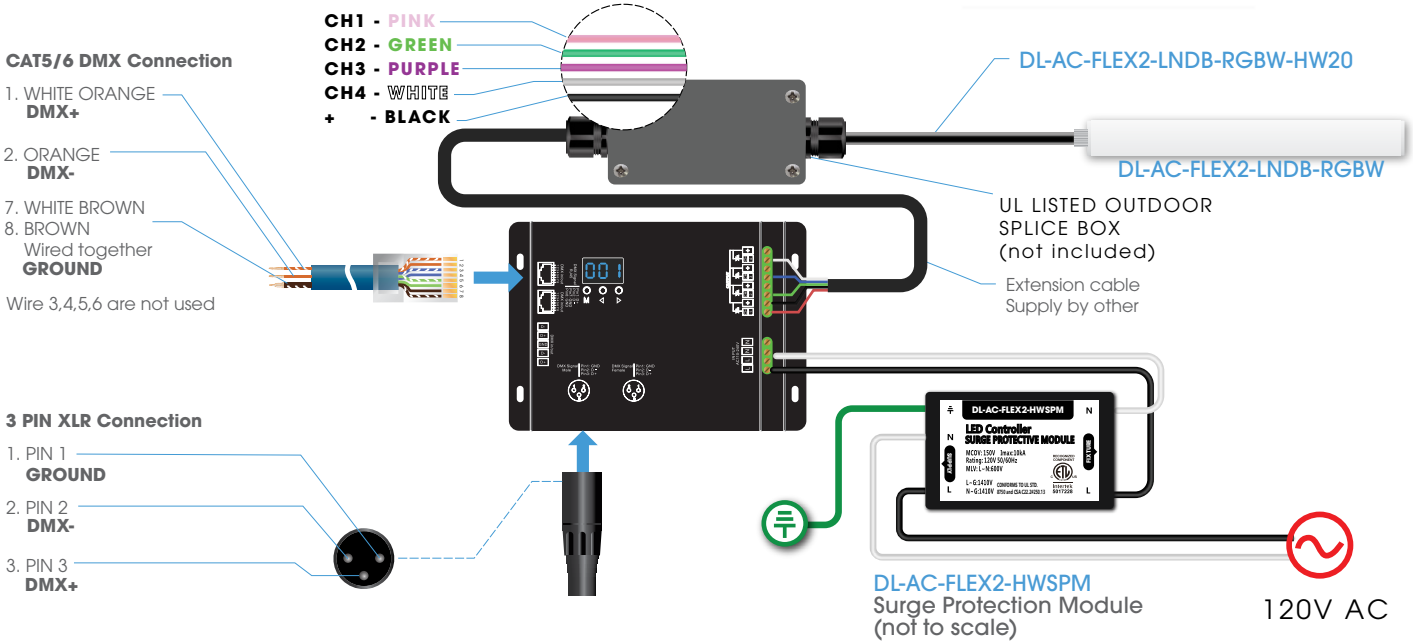
! CONSULT A QUALIFIED ELECTRICIAN TO ENSURE CORRECT BRANCH CIRCUIT. RATED 120VOLT AC

! All electrical connections must be in accordance with local codes, ordinances and the National Electric Code.

HARDWARE (included)



1x SJT CORD STRAIN RELIEF BUSHING



1. Connect 120V AC supply wire to DL-AC-FLEX2-HWSPM's input wires. BLACK to BLACK | WHITE to WHITE | GREEN to GROUND
2. Connect DL-AC-FLEX2-HWSPM's output wires to LC-AC-1000-INT's terminal block. BLACK to L, WHITE to N.
3. Connect DMX controller's power supply to 120V AC supply. LC-PC-600 connects directly to 120V AC.
4. Connect DMX controller's DMX output signal wires to either CAT5/6 cable with connector or to 3-PIN XLR connector and plug into LC-AC-1000-INT's associated DMX input port.
5. Secure DL-AC-FLEX2-RGBW-HW20 cable to LC-AC-1000-INT's output terminal block in the following: PINK to CH1 | GREEN to CH2 | PURPLE to CH3 | WHITE to CH4 | BLACK to any + terminal.

DL-AC-FLEX2-LNDB-RGBW

INFINA® 2 AC LED FLEXIBLE LINEAR LIGHTING • DRIVERLESS DUO-BEND RGBW



Installation with multiple LC-AC-1000-INT: CAT5 INPUT/OUTPUT

TURN OFF ELECTRICITY
At main fuse box (or circuit breaker box) before beginning installation by switching circuit breaker off or removing fuse. MIN 90° C SUPPLY CONDUCTORS.

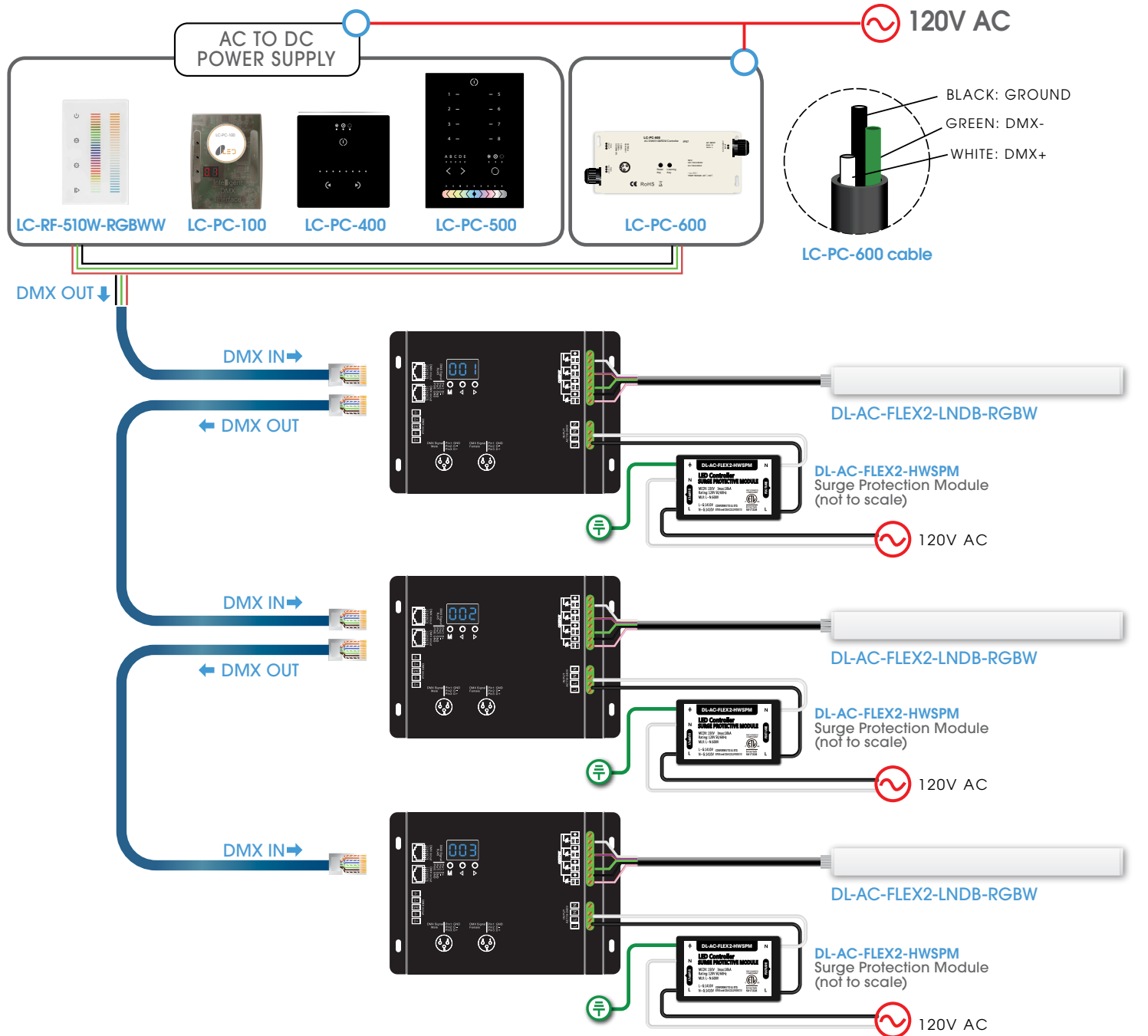
! CONSULT A QUALIFIED ELECTRICIAN TO ENSURE CORRECT BRANCH CIRCUIT. RATED 120VOLT AC

! All electrical connections must be in accordance with local codes, ordinances and the National Electric Code.

HARDWARE (included)



1x SJT CORD STRAIN RELIEF BUSHING



DL-AC-FLEX2-LNDB-RGBW

INFINA® 2 AC LED FLEXIBLE LINEAR LIGHTING • DRIVERLESS DUO-BEND RGBW



Installation with multiple LC-AC-1000-INT: XLR INPUT/OUTPUT

TURN OFF ELECTRICITY
At main fuse box (or circuit breaker box) before beginning installation by switching circuit breaker off or removing fuse. MIN 90° C SUPPLY CONDUCTORS.

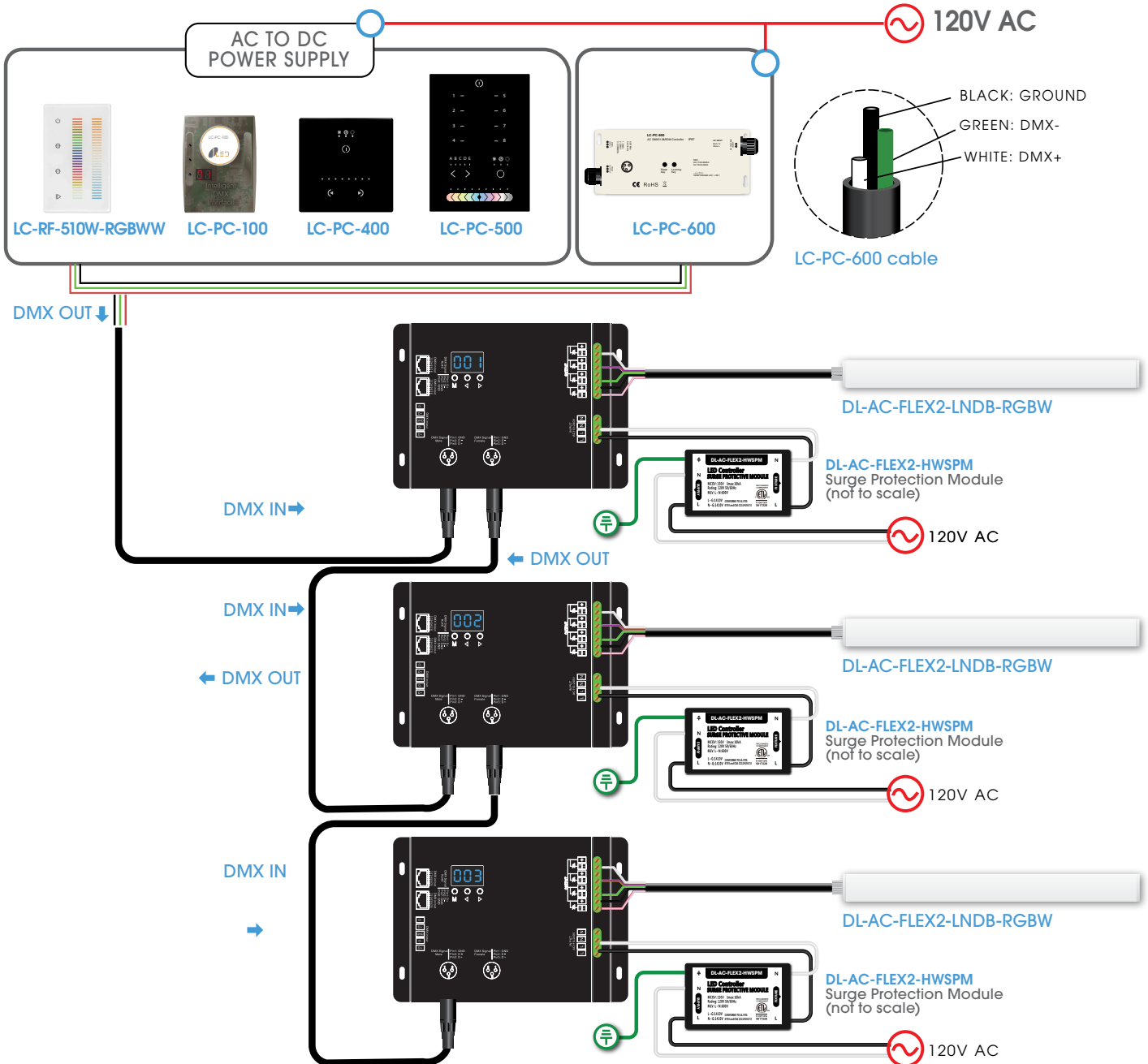
! CONSULT A QUALIFIED ELECTRICIAN TO ENSURE CORRECT BRANCH CIRCUIT. RATED 120VOLT AC

! All electrical connections must be in accordance with local codes, ordinances and the National Electric Code.

HARDWARE (included)



1x SJT CORD STRAIN RELIEF BUSHING



TROUBLESHOOTING

SPM - Surge Protection Module

Model : DL-AC-FLEX2-HWSPM

PROBLEM	POSSIBLE CAUSE	CORRECTION / ACTION
Product is not lighting up	<ol style="list-style-type: none"> 1. Breaker may have been tripped. 2. SPM may have meet end of life 3. Incorrect branch wiring with LC-AC-1000-INT and DL-AC-FLEX2-LNDB-RGBW hardwire cable. 4. Incorrect DMX cables wiring 	<ol style="list-style-type: none"> 1. Check and switch on breaker. 2. Order and replace SPM 3. Check wiring on LC-AC-1000-INT and DL-AC-FLEX2-RGBW hardwire cable. 4. Check DMX cables wiring
Some LEDs are not functional	<ol style="list-style-type: none"> 1. Product may have been bent excessively or bent on horizontal plane, potentially breaking connections. 	<ol style="list-style-type: none"> 1. Disconnect. Product warranty may have been voided, contact your local distributor
LEDs are flickering	<ol style="list-style-type: none"> 1. Product may have been bent excessively or bent on horizontal plane, potentially breaking connections 2. Product may be connected 120V AC directly 	<ol style="list-style-type: none"> 1. Disconnect. Product warranty may have been voided, contact your local distributor. 2. Disconnect. Product warranty may have been voided, contact your local distributor.
LEDs have uneven color	<ol style="list-style-type: none"> 1. Product may have been painted over or covered with foreign substance. 2. Product's operating temperature may have been exceeded. 3. Product may have prolonged exposure to direct sunlight 	<ol style="list-style-type: none"> 1. Clean product with non-corrosive cleaners. 2. Disconnect. Product warranty may have been voided, contact your local distributor. 3. Disconnect. Product warranty may have been voided, contact your local distributor.
Some LEDs and integral circuit chips appear oxidized with brown or green marks	<ol style="list-style-type: none"> 1. Product may have been submerged in puddle of water or snow for a period of time. 2. Product may have been altered in field. 	<ol style="list-style-type: none"> 1. Disconnect. Product warranty may have been voided, contact your local distributor. 2. Disconnect. Product warranty may have been voided, contact your local distributor.
LED strip is too long or too short for installation	<ol style="list-style-type: none"> 1. Incorrect measurements may be given to factory for production. 	<ol style="list-style-type: none"> 1. Contact your local distributor. Do not attempt to splice or field shorten the product. Doing so will void product warranty and ETL safety certification.

INFINA - SURGE PROTECTION MODULE FOR RGBW

DL-AC-FLEX2-LNDB-RGBW

INFINA® 2 AC LED FLEXIBLE LINEAR LIGHTING • DRIVERLESS DUO-BEND RGBW



CAUTIONS

<p>DO NOT BEND 90 DEGREE</p>	<p>DO NOT TWIST</p>	<p>DO NOT FOLD OR OVERLAP</p>	<p>DO NOT CUT / PUNCTURE LED STRIP OR CONNECTING CABLE</p>	<p>DO NOT INSTALL INSIDE BUILDING STRUCTURE</p>
<p>DO NOT HANG OR SUSPEND</p>	<p>DO NOT STEP ON OR PUT OBJECTS ON TOP</p>	<p>DO NOT COVER OR WRAP TAPE OVER</p>	<p>DO NOT PAINT OVER ANY PART</p>	<p>DO NOT USE THIRD PARTY FASTENERS</p>
<p>DO NOT USE ADHESIVE FOR INSTALLATION</p>	<p>DO NOT POWER ON WHEN STRIP LIGHT IS IN A POOL OR A REEL</p>	<p>DO NOT SUBMERGE OR INSTALL IN AREA WHERE IT IS LIKELY TO PUDDLE</p>	<p>DO NOT RECESSED IN DRYWALL, MILLWORK OR HANDRAIL</p>	

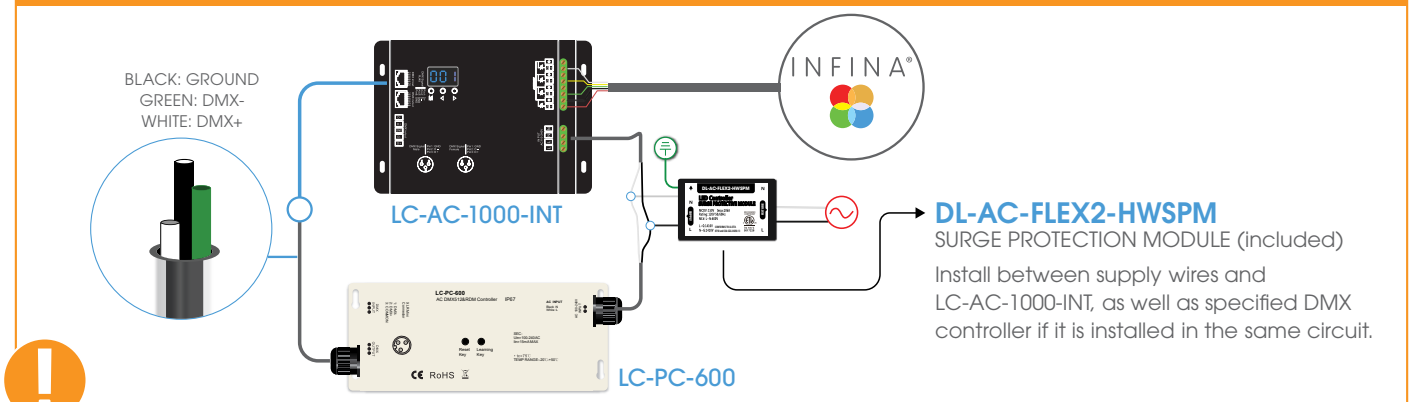
AVOID - DO NOT INSTALL

- IN CABINETS, TANKS OR ENCLOSURES OF ANY KIND
- NEAR FLAMMABLE OR CORROSIVE LIQUIDS

IP65

CONNECTS TO GFCI CIRCUITS ONLY

HARDWARE APPLICATIONS



WARRANTY IS VOID IF ANY OF THE ABOVE ARE VIOLATED