



UL Verification Services Inc.
7036 Snowdrift Road
Allentown, PA 18106
610-774-1300



Indoor Distribution Test Report

Relevant Standards
IES LM-79-2008
ANSI C82.77-2002

Prepared For
Jesco Lighting Group LLC

15 Harbor Park Dr
Port Washington, NY 11050
United States

Catalog Number
RLH-605-30N-3590

Order Number

11642482

Test Number

11642482.09

Test Date

2017-02-27

Prepared By

Derek Smarr, Technician

Approved By

Tiffany Hamm, Project Handler

The results contained in this report pertain only to the tested sample.
This report shall not be reproduced, except in full, without written approval of Underwriters Laboratories.
This report must not be used by the client to claim product certification, approval, or endorsement by
NVLAP, NIST, or any agency of the Federal Government.



Luminaire Description: Formed steel housing, formed aluminum heatsink, white plastic internal reflector, frosted plastic lens enclosure, semi-specular external reflector
Lamp: One white LED
Mounting: Recessed
Ballast/Driver: One ERP ESM040W-0800-42

Luminaire



Luminaire Characteristics

Luminous Length: 6.00 in.
Luminous Width: 6.000 in.

Summary of Results

Total Luminaire Output:	2223 Lumens
Luminaire Efficacy:	67.2 lm/w
Maximum Candela:	2670 Candela

Test Conditions

Test Temperature:	24.7 °C
Voltage:	120.0 VAC
Current:	0.2783 A
Power:	33.08 W
Power Factor:	0.991
Frequency:	60 Hz
Current THD:	10.4 %

Laboratory results may not be representative of field performance
Ballast factors have not been applied



Distribution - Goniophotometer

Distribution Test Conditions

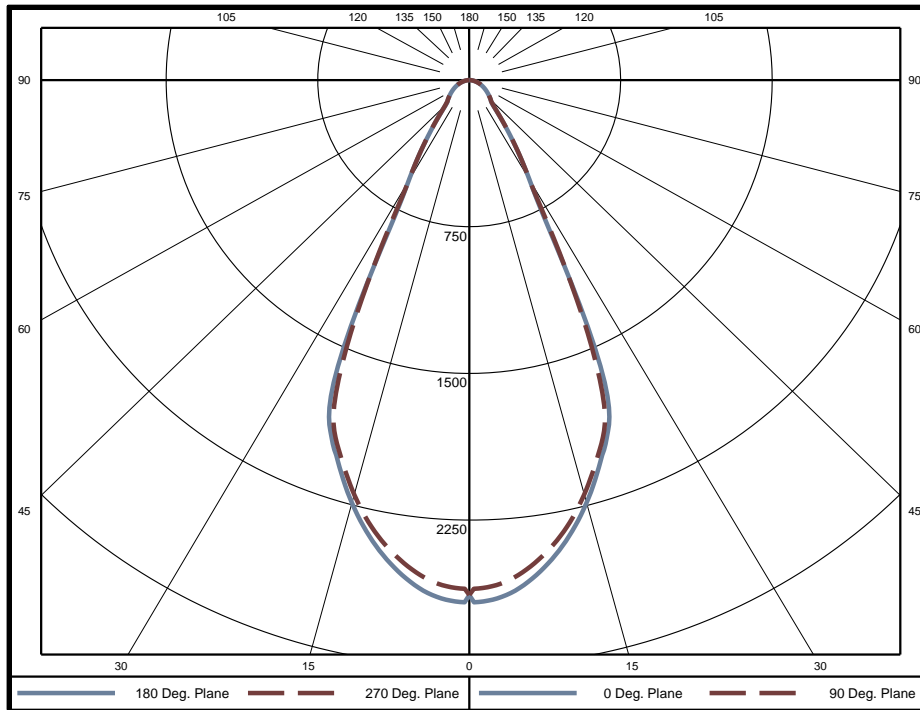
Temperature	Voltage	Current	Power	Power Factor	Frequency	Current THD
24.7 °C	120.0 VAC	0.2783 A	33.08 W	0.991	60 Hz	10.4 %

Summary of Results

Spacing Criteria
 0-180: 0.86
 90-270: 0.86

Total Lumen Output: 2223 Lumens
Luminaire Efficacy: 67.2 lm/w
Maximum Candela: 2670 Candela

Polar Plot



Zonal Lumen Summary

Zone	Lumens	% of Luminaire	Zone	Lumens	% of Luminaire	Zone	Lumens	% of Luminaire
0-5	62.4	2.8%	60-65	39.6	1.8%	120-125	0	0.0%
5-10	179.2	8.1%	65-70	32.3	1.5%	125-130	0	0.0%
10-15	275.4	12.4%	70-75	24.7	1.1%	130-135	0	0.0%
15-20	343.5	15.5%	75-80	17.3	0.8%	135-140	0	0.0%
20-25	375.5	16.9%	80-85	10.6	0.5%	140-145	0	0.0%
25-30	302.1	13.6%	85-90	5.4	0.2%	145-150	0	0.0%
30-35	194.4	8.7%	90-95	0	0.0%	150-155	0	0.0%
35-40	119.9	5.4%	95-100	0	0.0%	155-160	0	0.0%
40-45	80.2	3.6%	100-105	0	0.0%	160-165	0	0.0%
45-50	60.9	2.7%	105-110	0	0.0%	165-170	0	0.0%
50-55	52.9	2.4%	110-115	0	0.0%	170-175	0	0.0%
55-60	46.6	2.1%	115-120	0	0.0%	175-180	0	0.0%

Zone	Lumens	% of Luminaire
0-40	1852	83.3%
0-60	2093	94.2%
0-90	2223	100.0%
90-180	0	0.0%



Candela Tabulation

Horizontal Angle (Degrees)

	0	22.5	45	67.5	90	112.5	135	157.5	180	202.5	225	247.5	270	292.5	315	337.5
0	2633	2633	2633	2633	2633	2633	2633	2633	2633	2633	2633	2633	2633	2633	2633	2633
5	2621	2595	2579	2566	2554	2566	2579	2595	2621	2595	2579	2566	2554	2566	2579	2595
10	2465	2440	2427	2420	2412	2420	2427	2440	2465	2440	2427	2420	2412	2420	2427	2440
15	2242	2222	2211	2208	2201	2208	2211	2222	2242	2222	2211	2208	2201	2208	2211	2222
20	1979	1961	1960	1956	1945	1956	1960	1961	1979	1961	1960	1956	1945	1956	1960	1961
25	1392	1622	1698	1560	1334	1560	1698	1622	1392	1622	1698	1560	1334	1560	1698	1622
30	614	728	1382	790	621	790	1382	728	614	728	1382	790	621	790	1382	728
35	373	432	668	438	378	438	668	432	373	432	668	438	378	438	668	432
40	220	262	343	266	225	266	343	262	220	262	343	266	225	266	343	262
45	153	164	208	168	155	168	208	164	153	164	208	168	155	168	208	164
50	130	134	137	135	131	135	137	134	130	134	137	135	131	135	137	134
55	109	112	110	112	110	112	110	112	109	112	110	112	110	112	110	112
60	89	91	90	92	90	92	90	91	89	91	90	92	90	92	90	91
65	71	73	72	74	72	74	72	73	71	73	72	74	72	74	72	73
70	54	55	55	56	55	56	55	55	54	55	55	56	55	56	55	55
75	39	40	39	41	39	41	39	40	39	40	39	41	39	41	39	40
80	25	26	25	26	24	26	25	26	25	26	25	26	24	26	25	26
85	13	14	16	15	11	15	16	14	13	14	16	15	11	15	16	14
90	3	7	9	7	2	7	9	7	3	7	9	7	2	7	9	7
95	0	0	0	0	0	0	0	0	0	0	0	0	0	0	0	0
100	0	0	0	0	0	0	0	0	0	0	0	0	0	0	0	0
105	0	0	0	0	0	0	0	0	0	0	0	0	0	0	0	0
110	0	0	0	0	0	0	0	0	0	0	0	0	0	0	0	0
115	0	0	0	0	0	0	0	0	0	0	0	0	0	0	0	0
120	0	0	0	0	0	0	0	0	0	0	0	0	0	0	0	0
125	0	0	0	0	0	0	0	0	0	0	0	0	0	0	0	0
130	0	0	0	0	0	0	0	0	0	0	0	0	0	0	0	0
135	0	0	0	0	0	0	0	0	0	0	0	0	0	0	0	0
140	0	0	0	0	0	0	0	0	0	0	0	0	0	0	0	0
145	0	0	0	0	0	0	0	0	0	0	0	0	0	0	0	0
150	0	0	0	0	0	0	0	0	0	0	0	0	0	0	0	0
155	0	0	0	0	0	0	0	0	0	0	0	0	0	0	0	0
160	0	0	0	0	0	0	0	0	0	0	0	0	0	0	0	0
165	0	0	0	0	0	0	0	0	0	0	0	0	0	0	0	0
170	0	0	0	0	0	0	0	0	0	0	0	0	0	0	0	0
175	0	0	0	0	0	0	0	0	0	0	0	0	0	0	0	0
180	0	0	0	0	0	0	0	0	0	0	0	0	0	0	0	0

Average Luminance (cd/m²)

Horizontal Angle (Degrees)

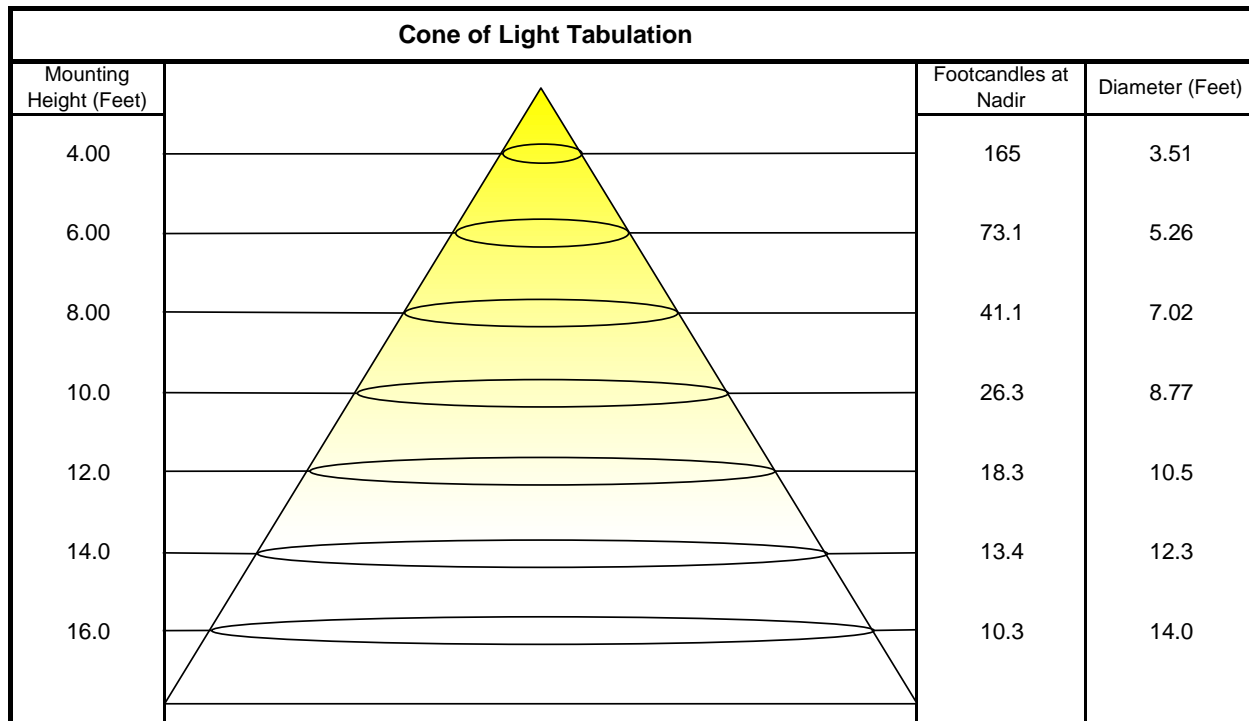
	0	45	90
0	113400	113400	113400
45	9287	12650	9433
55	8162	8286	8236
65	7245	7332	7378
75	6463	6495	6534
85	6178	7691	5461



Utilization of Lumens - Zonal Cavity Method

Effective Floor Cavity Reflectance 20%																		
Ceiling Cavity Reflectance	80				70				50			30			10			0
Wall Reflectance	70	50	30	10	70	50	30	10	50	30	10	50	30	10	50	30	10	0
Room Cavity Ratio (RCR)	** Values are expressed as Lumens delivered to the task surface **																	
0	2646	2646	2646	2646	2585	2585	2585	2585	2470	2470	2470	2365	2365	2365	2268	2268	2268	2223
1	2501	2431	2367	2310	2445	2382	2325	2273	2291	2245	2203	2208	2171	2137	2131	2102	2075	2034
2	2362	2239	2138	2053	2311	2200	2108	2030	2127	2051	1985	2060	1997	1942	1997	1947	1901	1862
3	2231	2073	1951	1853	2185	2041	1929	1838	1982	1886	1808	1927	1846	1779	1875	1809	1751	1714
4	2111	1928	1794	1692	2069	1902	1777	1681	1853	1746	1661	1807	1715	1641	1765	1687	1622	1586
5	2000	1800	1661	1558	1963	1779	1648	1550	1738	1624	1536	1700	1600	1522	1664	1578	1509	1474
6	1898	1687	1546	1444	1864	1669	1536	1439	1635	1517	1429	1603	1499	1419	1573	1481	1409	1375
7	1804	1586	1445	1346	1773	1571	1437	1343	1542	1422	1335	1514	1408	1328	1489	1393	1320	1288
8	1717	1495	1356	1261	1689	1482	1350	1258	1457	1338	1252	1434	1326	1247	1412	1314	1241	1210
9	1636	1414	1277	1185	1611	1402	1272	1183	1381	1262	1179	1361	1252	1174	1342	1243	1170	1140
10	1562	1339	1206	1118	1539	1330	1202	1116	1311	1194	1113	1293	1185	1109	1277	1178	1106	1076

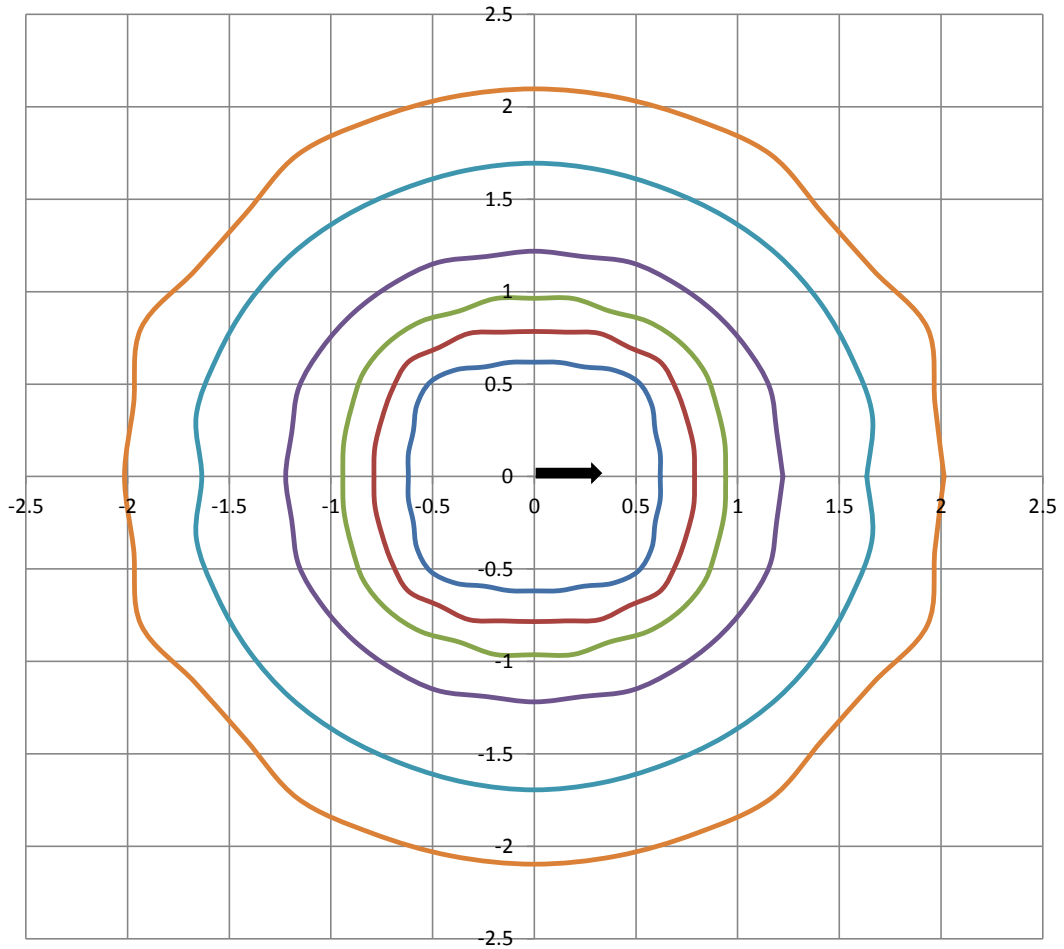
Beam and Field Information	
CIE Type:	Direct
Center Beam Intensity:	2633 Candela
Central Cone Intensity:	2616 Candela
Beam Flux:	1406.5 Lumens
Beam Angle (0-180):	50.6 Degrees
Beam Angle (90-270):	50.2 Degrees
Field Angle (0-180):	76.6 Degrees
Field Angle (90-270):	76.9 Degrees





ISOFootcandle Plot

Mounting Height - 8 Feet



Grid Lines in Units of Mounting Height

