

DL-AC-FLEX2-DIM4A

0-10V DIMMING INTERFACE • DMX
LINE VOLTAGE DIMMING INTERFACE



Fixture Type
Project
Notes



DL-AC-FLEX2-DIM4A converts 0-10V signal to work with Forward Phase and Reverse Phase loads. DL-AC-FLEX2-DIM4A can effectively dim most INFINA®2 products down to 15%. It is suitable for TRIAC and ELV loads.



SPECIFICATIONS

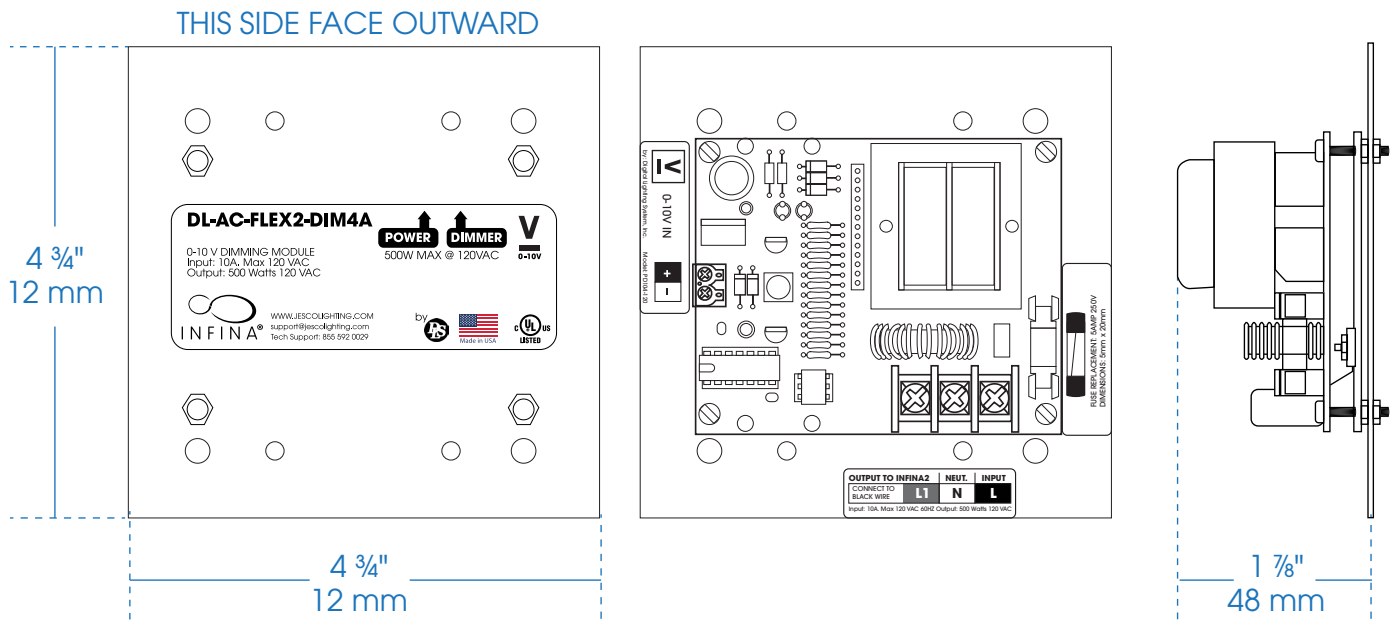
INPUT VOLTAGE	120V AC				
RATED WATTAGE	Up to 500W				
INFINA® 2.0	UT	FS	JA8	EB	LT
Max. Single Run Length	85ft	120ft	100ft	164ft	120ft
Max. Combined Run Length	85ft	120ft	120ft	195ft	120ft
DIM LEVEL	15%	15%	10%	15%	15%
DIMMING ¹	0-10V				
DIMENSIONS ²	4 3/4" L x 4 3/4" W x 1 7/8" D				
ENVIRONMENT	Indoor, Dry				
CERTIFICATIONS	cULus				
WARRANTY ³	5 Years				

ORDERING INFO

MODEL
DL-AC-FLEX2-DIM4A

- ¹ Nominal
- ² Never exceed dimmer max. wattage
- ³ A [five \(5\) year limited warranty](#)

DIMENSIONS



MUST BE INSTALLED IN 2 GANG DEEP BOX

NY 15 Harbor Park Drive
Port Washington, NY 11050

Main 800 527 7796
Fax 855 265 5768

CA 219 South 6th Ave
City of Industry, CA 91746

Main 800 527 7796
Fax 855 265 5768

i support@jescolighting.com
Tech Support 855 592 0029

DL-AC-FLEX2-DIM4A

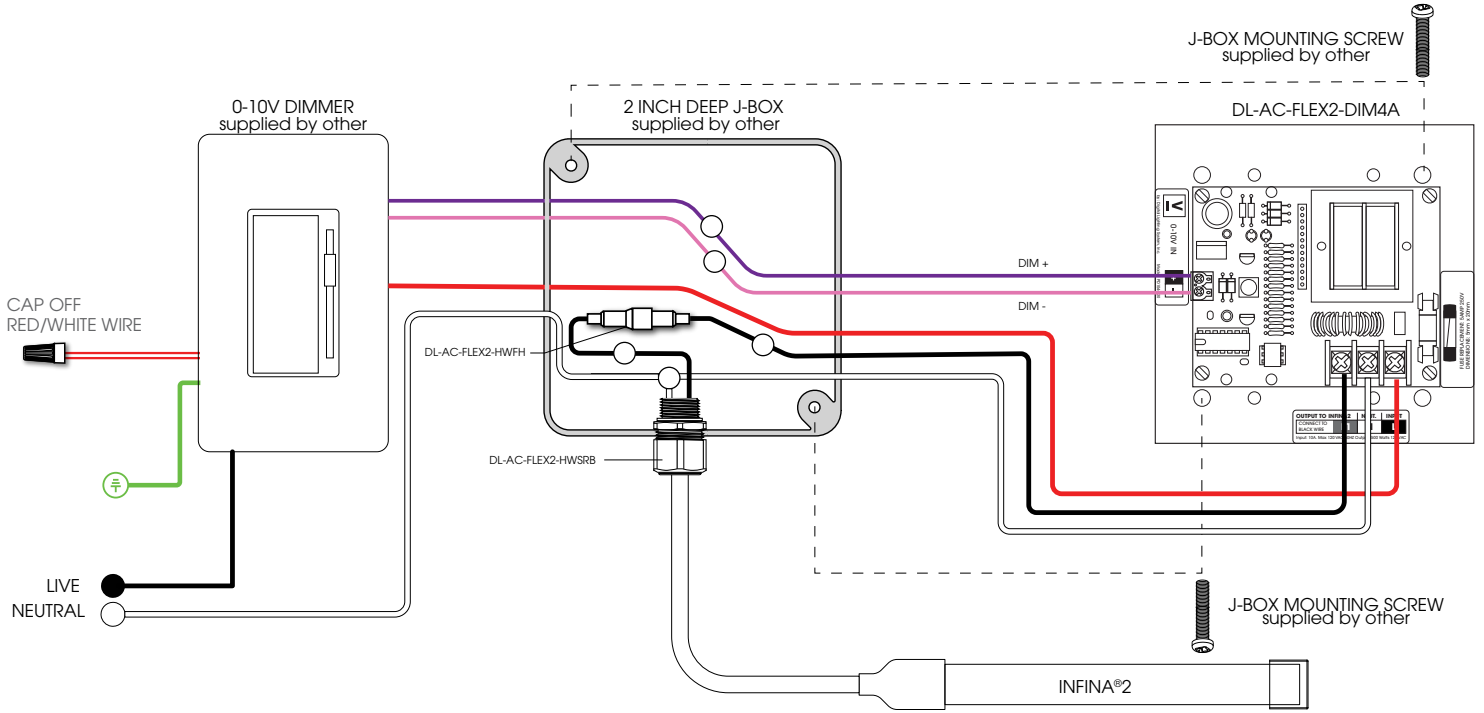
0-10V DIMMING INTERFACE • DMX
LINE VOLTAGE DIMMING INTERFACE



Fixture Type
Project
Notes

COMPATIBLE DIMMERS 0-10V DIMMING

MANUFACTURER / STYLE	MODEL NUMBER	TYPE	INPUT VOLTAGE RANGE	DIMMING RANGE	MAX WATTAGE
LUTRON / DIVA	DVSTV-WH	0-10V	120-277V	9-100%	450W



NOTE: All available dimmers have not been tested with INFINA@2 and there may be several factors during installation that can affect performance. Prior testing of your exact application of INFINA@2 and your designated dimmer is highly recommended.